

N-D PLANE COORDINATE SYSTEM

Existing Utilities

(Show Size and Type) C Monhole (Typ.) E/C

W

G

T

E

SF PROPOSED SILT FENCE

LOD PROPOSED LIMIT OF DISTURBANCE

Existing Junction Box

Exist MH (Size) Flow EL

PROPOSED MH

NV. EL

PROPOSED MH

NV. EL

SIZE, TYPE AND LENGTH

SIZE, TYPE AND LENGTH

FLOW →

FLOW →

RECONSTRUCT

RESET HEAD

Flow

FM

PROPOSED AIR / CD MH

FM

BITUMINOUS

Exist

PROPOSED

PROPOSED

TOE (T) TOP (C)

12+00 13+00

12+00 13+00

PROPOSED R.G.W.

Former R.G.W.

Former Row Line

Existing

R

PROPOSED

PROPOSED

PROPOSED (Size, Slope or Vertices)

PROPOSED

PROPOSED

PROPOSED

PROPOSED

ANCHORAGE

B.C.T.

EXISTING MONUMENT
 ■ **NEW MONUMENT**

B.M.
 # BENCH MARK

DETAIL REFERENCE
 28
 C06

PROFILE REFERENCE
 A
 PR1

PARCEL
 D - PARCEL No. OF BUILDINGS TO BE DEMOLISHED

DEMOLITION No. & PARCEL No. OF BUILDINGS TO BE DEMOLISHED
 10

INDICATES PROPOSED PARKING STALL COUNT

PROBING
 ○ Exist. Light
 WV-Water Gate Valve
 GV-Gas Gate Valve
 ○ Pole No. & Type (Guy, Light, Etc.)
 ○ Hydrant
 ○ Traffic Light
 □ Traffic Control Box

BORED
 ○ Deciduous Trees
 ○ Bush Or Shrub
 ○ Evergreens
 ○ Roadway Signs
 ○ Street Sign

TBR = TO BE REMOVED
 ○ Wooded Area
 ○ Hedges

PGL = PROFILE GRADE LINE
 ○ Profile Line
 ○ Level Line

PROPOSED R.C. END SECT. OR C.M. HEADWALL
 △ Exist. R.C. End Section Or C.M. Headwall

PROPOSED HEADWALL
 ■ Exist. Headwall

PROPOSED HEADWALL & APRON
 ■ Exist. Headwall & Apron

Existing utility information shown herein has been collected from various sources and is not guaranteed as to accuracy or completeness. The contractor shall verify all information to his satisfaction prior to excavation.


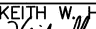
The contractor shall notify the undersigned professional immediately if any field conditions are encountered that differ materially from those represented herein.

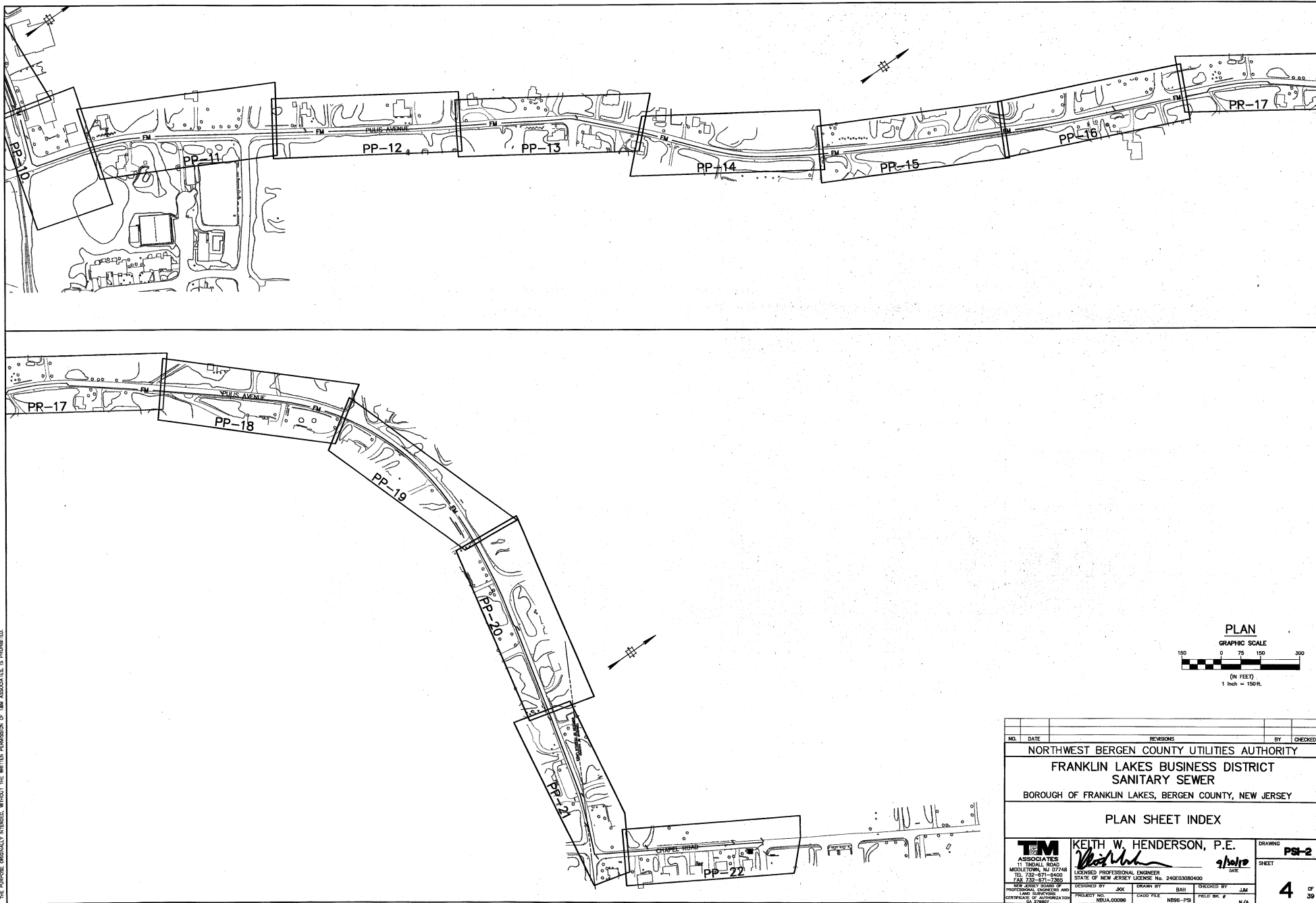
3. All materials, workmanship, and construction for site improvements shown herein shall be in accordance with:

- A. N.J. Department of Transportation "Standard Specifications for Road and Bridge Construction"
- B. Current, prevailing municipal and/or county specifications, standards, and requirements
- C. Current, prevailing utility company/authority specifications, standards and requirements
- D. Current, prevailing edition of the Residential Site Improvement Ordinance

- LOCATION OF UTILITIES SHOWN ON THE PLANS ARE PLOTTED FROM AVAILABLE DATA ON FILE WITH THE UTILITY COMPANIES AND ARE NOT WARRANTED AS TO EXACTNESS.
- CONTRACTOR IS TO DETERMINE EXACT LOCATION AND DEPTH OF UTILITIES AT ALL CROSSINGS PRIOR TO CONSTRUCTION IN ACCORDANCE WITH THE REQUIREMENTS OF THE CONTRACT DOCUMENTS.
- N.J. UNDERGROUND UTILITIES LOCATION**
- TELEPHONE NUMBER IS: 1-800-272-1000**

- 1 CURB SIDE FIXED FLANGE NUT ON F. HYD., EAST SIDE PULVIS AVE.
AT UNDERWAY INTERSECTION.
- 2 " " " " " " " " " " " "
- 3 " " " " " " " " " " " "
- 4 " " " " " " " " " " " "
- 5 " " " " " " " " " " " "
- 6 BOX CUT SET ON EAST SIDE OF CONC. BASE OF LAMP POST NORTH
NORTH BENDER DR. OPPOSITE BENDER CT. INTERSECTION.
- 7 CURB SIDE FIXED FLANGE NUT ON F. HYD. NORTH SIDE OF COMMERCE
ELEV. 380.9
- 8 " " " " " " " " " " " "
- 9 " " " " " " " " " " " "
- 10 " " " " " " " " " " " "
- 11 " " " " " " " " " " " "
- 12 " " " " " " " " " " " "
- 13 " " " " " " " " " " " "
- 14 " " " " " " " " " " " "
- 15 " " " " " " " " " " " "
- 16 " " " " " " " " " " " "
- 17 " " " " " " " " " " " "
- 18 " " " " " " " " " " " "
- 19 " " " " " " " " " " " "
- 20 " " " " " " " " " " " "
- 21 " " " " " " " " " " " "
- 22 " " " " " " " " " " " "
- 23 " " " " " " " " " " " "
- 24 " " " " " " " " " " " "
- 25 " " " " " " " " " " " "
- 26 " " " " " " " " " " " "
- 27 " " " " " " " " " " " "
- 28 " " " " " " " " " " " "
- 29 " " " " " " " " " " " "
- 30 " " " " " " " " " " " "
- 31 " " " " " " " " " " " "
- 32 " " " " " " " " " " " "
- 33 " " " " " " " " " " " "
- 34 " " " " " " " " " " " "
- 35 " " " " " " " " " " " "
- 36 " " " " " " " " " " " "
- 37 " " " " " " " " " " " "
- 38 " " " " " " " " " " " "
- 39 " " " " " " " " " " " "
- 40 " " " " " " " " " " " "
- 41 " " " " " " " " " " " "
- 42 " " " " " " " " " " " "
- 43 " " " " " " " " " " " "
- 44 " " " " " " " " " " " "
- 45 " " " " " " " " " " " "
- 46 " " " " " " " " " " " "
- 47 " " " " " " " " " " " "
- 48 " " " " " " " " " " " "
- 49 " " " " " " " " " " " "
- 50 " " " " " " " " " " " "
- 51 " " " " " " " " " " " "
- 52 " " " " " " " " " " " "
- 53 " " " " " " " " " " " "
- 54 " " " " " " " " " " " "
- 55 " " " " " " " " " " " "
- 56 " " " " " " " " " " " "
- 57 " " " " " " " " " " " "
- 58 " " " " " " " " " " " "
- 59 " " " " " " " " " " " "
- 60 " " " " " " " " " " " "
- 61 " " " " " " " " " " " "
- 62 " " " " " " " " " " " "
- 63 " " " " " " " " " " " "
- 64 " " " " " " " " " " " "
- 65 " " " " " " " " " " " "
- 66 " " " " " " " " " " " "
- 67 " " " " " " " " " " " "
- 68 " " " " " " " " " " " "
- 69 " " " " " " " " " " " "
- 70 " " " " " " " " " " " "
- 71 " " " " " " " " " " " "
- 72 " " " " " " " " " " " "
- 73 " " " " " " " " " " " "
- 74 " " " " " " " " " " " "
- 75 " " " " " " " " " " " "
- 76 " " " " " " " " " " " "
- 77 " " " " " " " " " " " "
- 78 " " " " " " " " " " " "
- 79 " " " " " " " " " " " "
- 80 " " " " " " " " " " " "
- 81 " " " " " " " " " " " "
- 82 " " " " " " " " " " " "
- 83 " " " " " " " " " " " "
- 84 " " " " " " " " " " " "
- 85 " " " " " " " " " " " "
- 86 " " " " " " " " " " " "
- 87 " " " " " " " " " " " "
- 88 " " " " " " " " " " " "
- 89 " " " " " " " " " " " "
- 90 " " " " " " " " " " " "
- 91 " " " " " " " " " " " "
- 92 " " " " " " " " " " " "
- 93 " " " " " " " " " " " "
- 94 " " " " " " " " " " " "
- 95 " " " " " " " " " " " "
- 96 " " " " " " " " " " " "
- 97 " " " " " " " " " " " "
- 98 " " " " " " " " " " " "
- 99 " " " " " " " " " " " "
- 100 " " " " " " " " " " " "

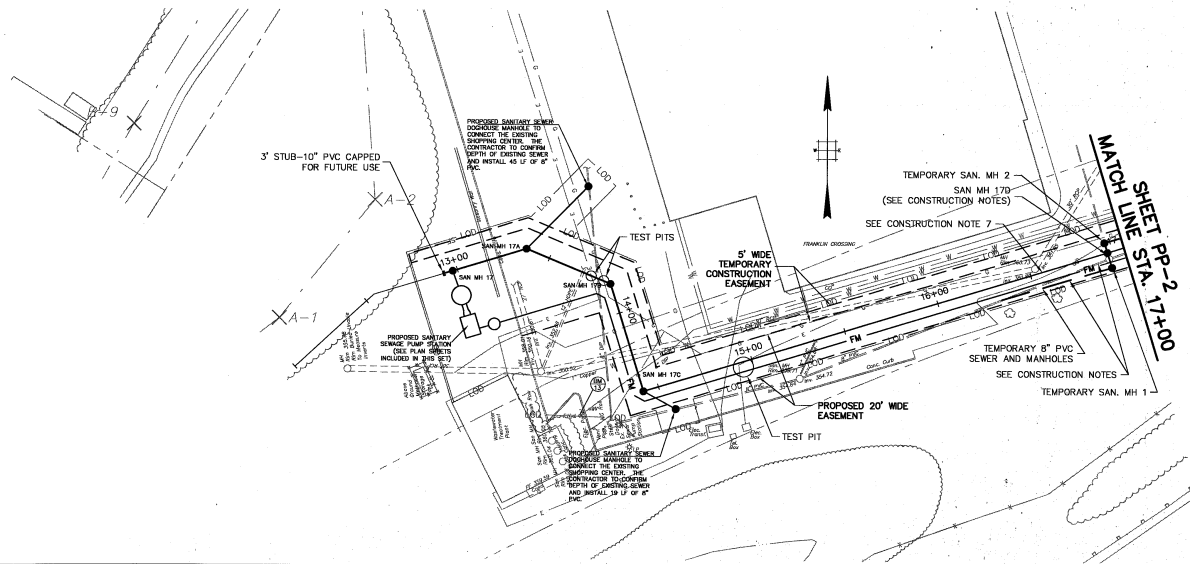
1	2/15/11	REVISED FOR NUDEP COMMENTS	BP	JAM
NO.	DATE	REVISIONS	BY	CHECKED
NORTHWEST BERGEN COUNTY UTILITIES AUTHORITY				
FRANKLIN LAKES BUSINESS DISTRICT SANITARY SEWER				
BOROUGH OF FRANKLIN LAKES, BERGEN COUNTY, NEW JERSEY				
LEGEND AND GENERAL NOTES				
 11 TINDAL ROAD MOULTON, NJ 07748 TEL 732-671-8400 FAX 732-671-7385 NEW JERSEY BOARD OF PROFESSIONAL ENGINEERS CERTIFICATE OF AUTHORIZATION NO. 10392			DRAWING LGD SHEET 2 OF 39	
KEITH W. HENDERSON, P.E.  LICENSED PROFESSIONAL ENGINEER STATE OF NEW JERSEY LICENSE NO. 246C3080400 DESIGNED BY BP DRAWN BY BAH CHECKED BY JAM PROJECT NO. NJWA.00096 CADD FILE FIELD Bk # N/A GENERAL - LRD				



COPYRIGHT 2010, TMN ASSOCIATES - ALL RIGHTS RESERVED. NO PART OF THIS DRAWING, INCLUDING THE DESIGN, CONSTRUCTION, OR ANY OTHER PART, MAY BE REPRODUCED OR TRANSMITTED IN ANY FORM OR BY ANY MEANS, ELECTRONIC OR MECHANICAL, WITHOUT THE WRITTEN PERMISSION OF TMN ASSOCIATES, IS PROHIBITED.

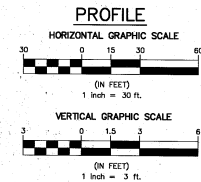
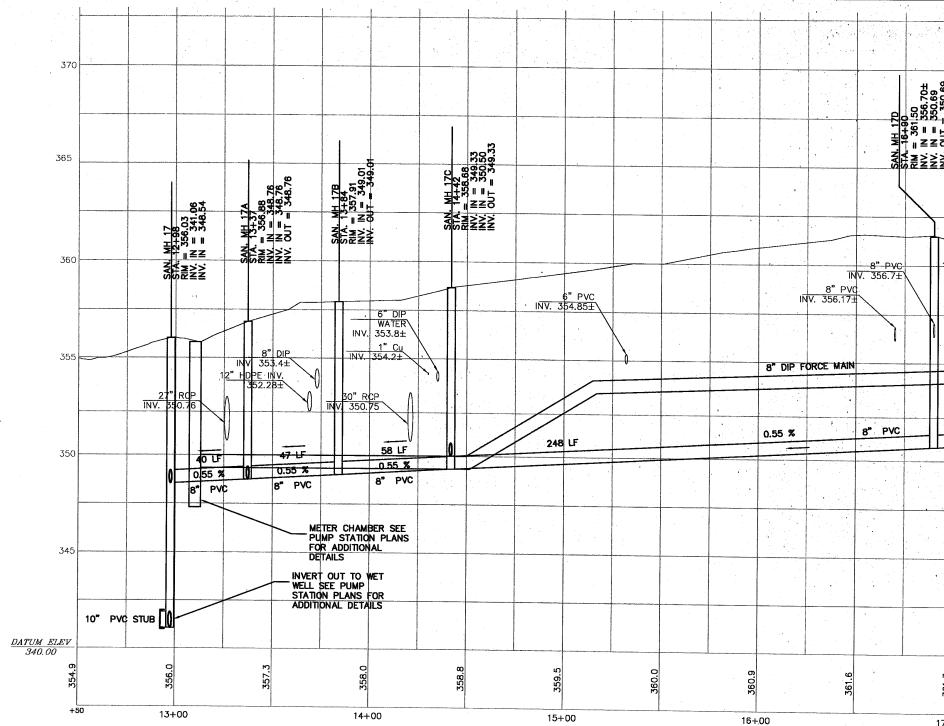
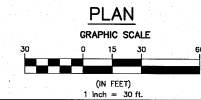
NO.	DATE	REVISIONS	BY	CHECKED
NORTHWEST BERGEN COUNTY UTILITIES AUTHORITY FRANKLIN LAKES BUSINESS DISTRICT SANITARY SEWER BOROUGH OF FRANKLIN LAKES, BERGEN COUNTY, NEW JERSEY				
PLAN SHEET INDEX				
TM ASSOCIATES 11 TINDALL ROAD MIDLETON, NJ 07748 TEL: 732-671-5400 FAX: 732-671-7365 NEW JERSEY BOARD OF PROFESSIONAL ENGINEERS AND SURVEYORS CERTIFICATE OF AUTHORIZATION NO. 000000		KEITH W. HENDERSON, P.E. LICENSED PROFESSIONAL ENGINEER STATE OF NEW JERSEY LICENSE NO. 24602030400 DESIGNED BY: JMK DRAWN BY: BAH CHECKED BY: JLM FIELD BY: # PROJECT NO.: NBUA.000096 CADD FILE: NBUA-PS		
DATE: 9/10/10		SHEET: PSI-2 4 OF 39		

CONTRACTOR SHALL MAINTAIN ALL EXISTING UTILITIES AND SHALL BE RESPONSIBLE FOR THE PROTECTION OF ALL UTILITIES. THE CONTRACTOR SHALL BE RESPONSIBLE FOR THE PROTECTION OF ALL UTILITIES. THE CONTRACTOR SHALL BE RESPONSIBLE FOR THE PROTECTION OF ALL UTILITIES. THE CONTRACTOR SHALL BE RESPONSIBLE FOR THE PROTECTION OF ALL UTILITIES.

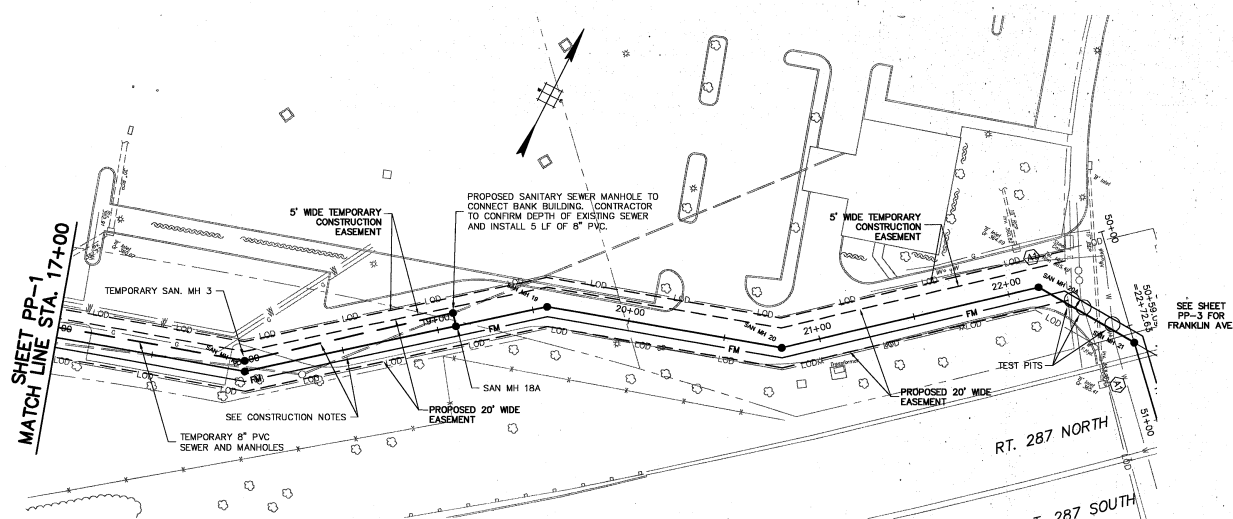


CONSTRUCTION NOTES:

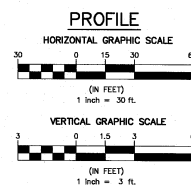
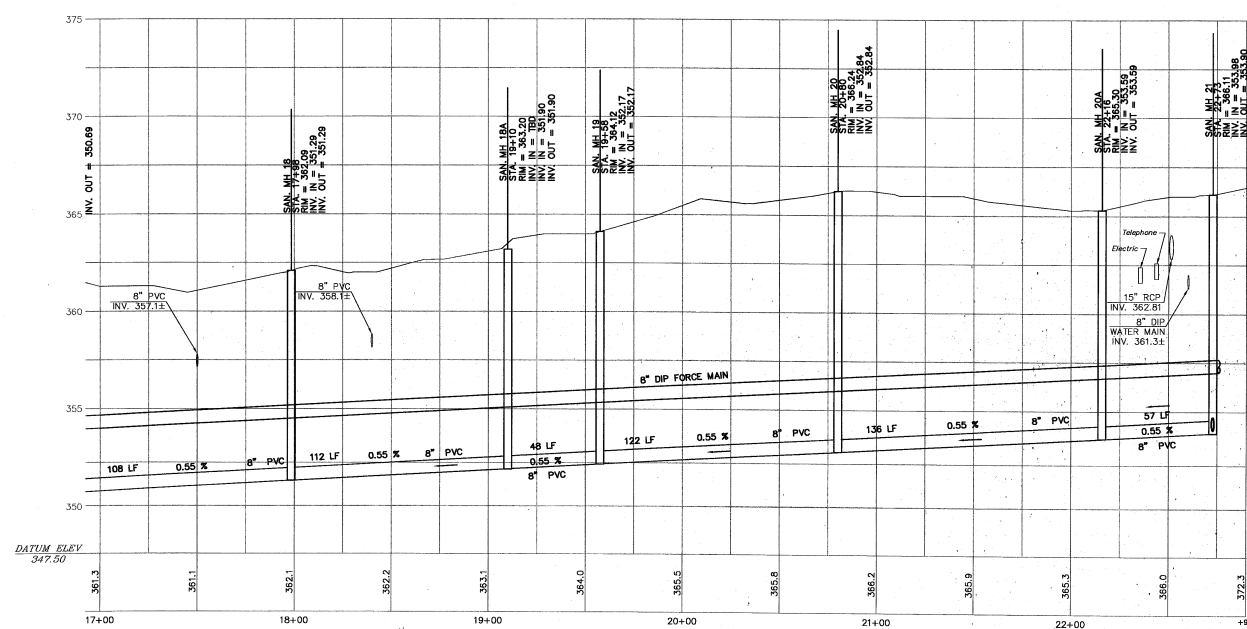
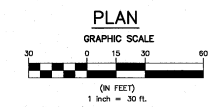
- CONTRACTOR TO REMOVE EXISTING FRANKLIN CROSSING EIGHT (8) INCH SANITARY SEWER PIPE AND MANHOLES THAT CONFLICT WITH CONSTRUCTION OF NEW GRAVITY SEWER AND FORCE MAIN.
- CONTRACTOR TO INSTALL TEMPORARY EIGHT (8) INCH PVC SEWER AND MANHOLES AS SHOWN WHILE CONSTRUCTING PROPOSED GRAVITY SEWER AND FORCE MAIN. DEPTH OF EXISTING SYSTEM TO BE CONFIRMED BY CONTRACTOR.
- CONTRACTOR TO MAINTAIN SEWER SERVICE FOR ALL FRANKLIN CROSSING BUILDINGS DURING CONSTRUCTION OF TEMPORARY SYSTEM AND REMOVAL OF EXISTING SYSTEM.
- EXISTING FRANKLIN CROSSING SEWER TO RUN THROUGH SANITARY MANHOLE 170 UNTIL SYSTEM IS PUT INTO OPERATION. CONTRACTOR SHALL THEN CUT PIPE IN MANHOLE AND CONSTRUCT INTERIOR DROP CONNECTION TO DIVERT SEWAGE FLOW INTO NEW EIGHT (8) INCH SEWER.
- TEMPORARY SYSTEM PIPES TO BE PUGHED WITH CONCRETE AND MANHOLES TO BE FILLED UPON COMPLETION OF PROJECT AND STARTUP OF SYSTEM OPERATION. (SEE DRAWING DE-1 FOR DETAIL)
- COST OF TEMPORARY EIGHT (8) INCH PVC AND MANHOLES TO BE PAID FOR UNDER UNIT PRICES FOR PIPE AND MANHOLES IN PROPOSAL. NO ADDITIONAL PAYMENT WILL BE MADE FOR MAINTENANCE OF SERVICE DURING TEMPORARY SYSTEM INSTALLATION AND REMOVAL OF EXISTING PIPE. COST OF ABANDONING TEMPORARY SYSTEM SHALL ALSO BE INCLUDED IN UNIT PRICE BID FOR SEWER AND MANHOLES.
- CONTRACTOR TO SUPPORT 30 INCH STORM SEWER AND MANHOLE DURING CONSTRUCTION OF GRAVITY SEWER AND FORCE MAIN, OR TEMPORARILY REMOVE AND REPLACE AS REQUIRED. COST FOR THIS WORK TO BE INCLUDED IN PRICE BID FOR EIGHT (8) INCH PVC SEWER.
- CONTRACTOR IS ADVISED THERE IS IRRIGATION PIPING AND SPRINKLER HEADS IN THE AREAS SOUTH OF THE PARKING LOT. CONTRACTOR SHALL REMOVE AND REPLACE IRRIGATION SYSTEM AS REQUIRED FOR INSTALLATION OF THE NEW PIPING. COSTS FOR THIS WORK SHALL BE INCLUDED IN PRICE BID FOR SEWER PIPING.
- PAVEMENT REPAIR OF TRENCH SHALL BE IN ACCORDANCE WITH THICKNESSES SPECIFIED FOR MUNICIPAL ROADS. SEE DETAIL ON DRAWING CD-2.



1	2/15/11	REVISED PER NADP COMMENTS	BP	JM
NO.	DATE	REVISIONS	BY	CHECKED
NORTHWEST BERGEN COUNTY UTILITIES AUTHORITY				
FRANKLIN LAKES BUSINESS DISTRICT				
SANITARY SEWER				
BOROUGH OF FRANKLIN LAKES, BERGEN COUNTY, NEW JERSEY				
PLAN, PROFILE & SOIL EROSION AND SEDIMENT CONTROL PLAN				
STA. 12+00 TO STA. 17+00				
TM ASSOCIATES 11 THORNTON ROAD MIDDLETOWN, NJ 07748 TEL: 201-671-6400 FAX: 201-671-7385		KEITH W. HENDERSON, P.E. LICENSED PROFESSIONAL ENGINEER STATE OF NEW JERSEY LICENSE NO. 24603080400 DESIGNED BY: <i>KEITH W. HENDERSON</i> CHECKED BY: <i>KEITH W. HENDERSON</i> DATE: <i>2/15/11</i>		
NEW JERSEY SEAL OF PROFESSIONAL ENGINEERS AND LAND SURVEYORS CERTIFICATE NO. 24603080400	PROJECT NO.: NJUA00096 CADD FILE: NBS9-SS-PP FIELD SK. # N/A	DRAWING: PP-1 SHEET: 5 OF 39		

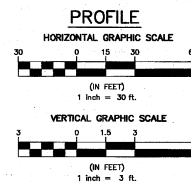
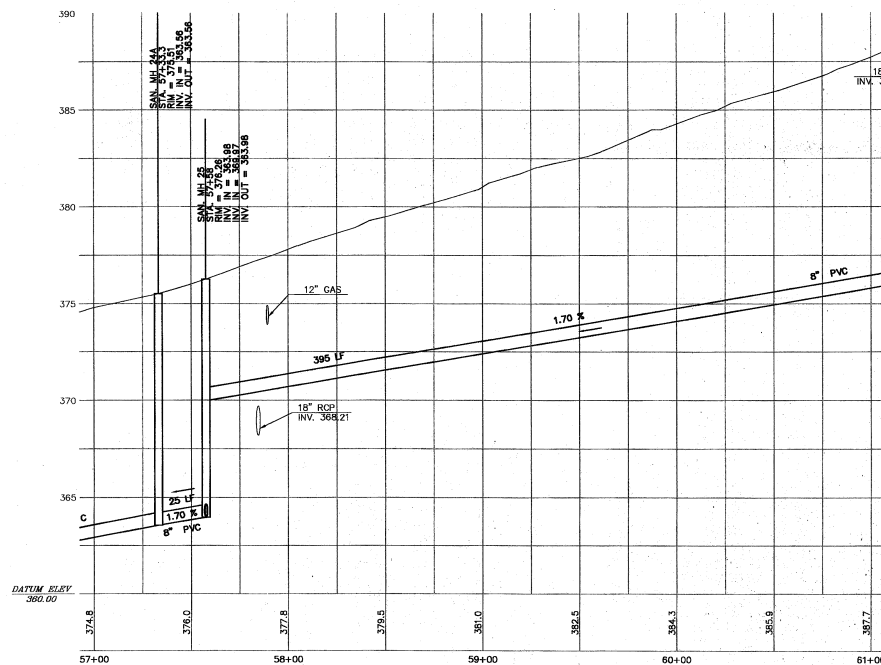
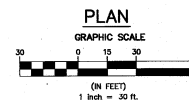
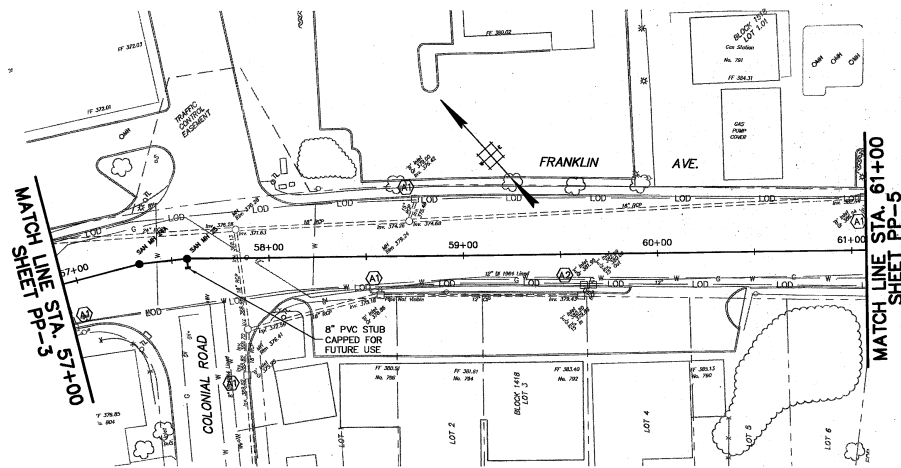


- CONSTRUCTION NOTES:**
1. CONTRACTOR TO REMOVE EXISTING FRANKLIN CROSSING EIGHT (8) INCH SANITARY SEWER PIPE AND MANHOLES THAT CONFLICT WITH CONSTRUCTION OF NEW GRAVITY SEWER AND FORCE MAIN.
 2. CONTRACTOR TO INSTALL TEMPORARY EIGHT (8) INCH PVC SEWER AND MANHOLES AS SHOWN WHILE CONSTRUCTING PROPOSED GRAVITY SEWER AND FORCE MAIN. DEPTH OF EXISTING SYSTEM TO BE CONFIRMED BY CONTRACTOR.
 3. CONTRACTOR TO MAINTAIN SEWER SERVICE FOR ALL FRANKLIN CROSSING BUILDINGS DURING CONSTRUCTION OF TEMPORARY SYSTEM AND REMOVAL OF EXISTING SYSTEM.
 4. TEMPORARY SYSTEM PIPES TO BE PLUGGED WITH CONCRETE AND MANHOLES TO BE FILLED UPON COMPLETION OF PROJECT AND STARTUP OF SYSTEM OPERATION. (SEE DRAWING DE-1 FOR DETAIL)
 5. COST OF TEMPORARY EIGHT (8) INCH PVC AND MANHOLES TO BE PAID FOR UNDER UNIT PRICES FOR PIPE AND MANHOLES IN PROPOSAL. NO ADDITIONAL PAYMENT WILL BE MADE FOR MAINTENANCE OF SERVICE DURING TEMPORARY SYSTEM INSTALLATION AND REMOVAL OF EXISTING PIPE. COST OF ABANDONING TEMPORARY SYSTEM SHALL ALSO BE INCLUDED IN UNIT PRICE BID FOR SEWER AND MANHOLES.
 6. CONTRACTOR SHALL MAINTAIN ONE LANE FOR EXISTING TRAFFIC FROM FRANKLIN CROSSING BETWEEN STA. 20+00 AND FRANKLIN AVENUE.
 7. CONTRACTOR IS ADVISED THERE IS IRRIGATION PIPING AND SPRINKLER HEADS IN THE AREAS SOUTH OF THE PARKING LOT. CONTRACTOR SHALL REMOVE AND REPLACE IRRIGATION SYSTEM AS REQUIRED FOR INSTALLATION OF THE NEW PIPING. COSTS FOR THIS WORK SHALL BE INCLUDED IN PRICE BID FOR SEWER PIPING.
 8. PAVEMENT REPAIR OF TRENCH SHALL BE IN ACCORDANCE WITH THICKNESSES SPECIFIED FOR MUNICIPAL ROADS. SEE DETAIL ON DRAWING CD-2.



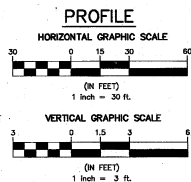
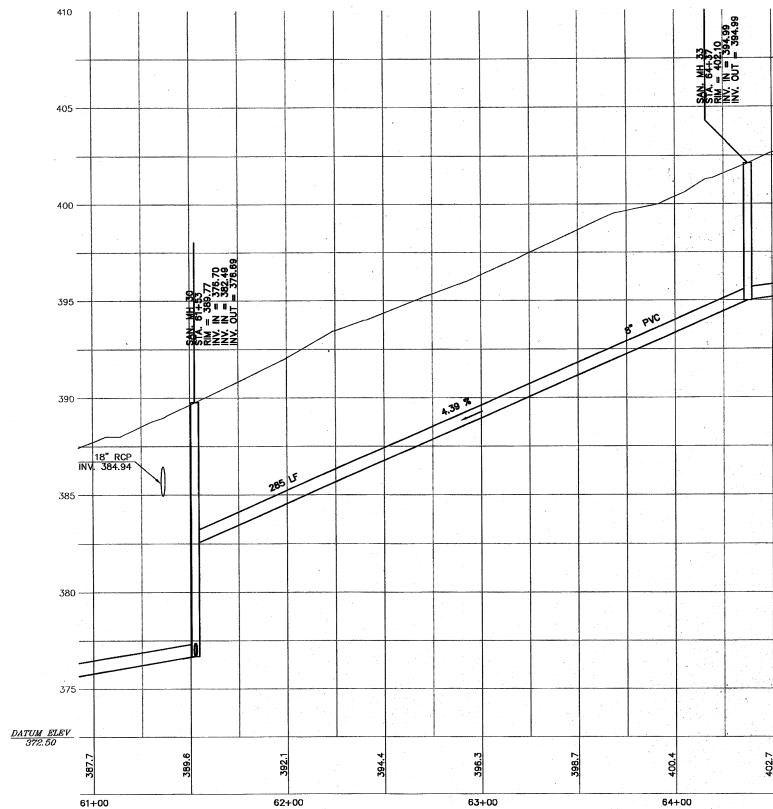
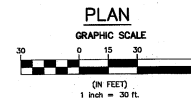
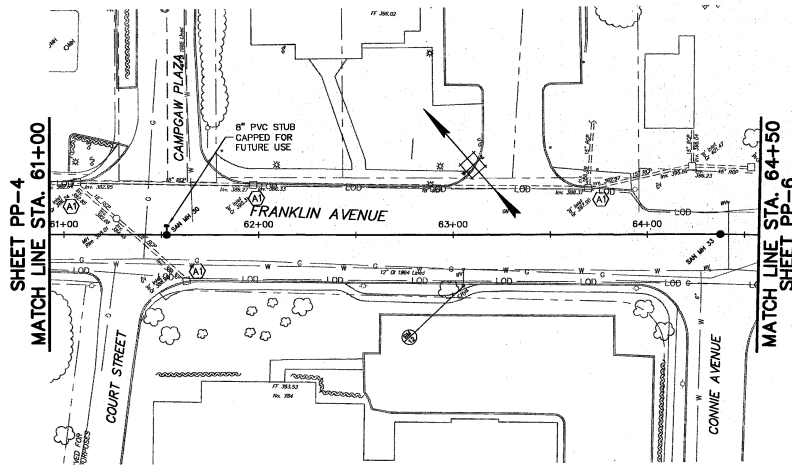
1	2/5/11	REVISED FOR NADSP COMMENTS	BP	JAM
NO.	DATE	REVISIONS	BY	CHECKED
NORTHWEST BERGEN COUNTY UTILITIES AUTHORITY				
FRANKLIN LAKES BUSINESS DISTRICT				
SANITARY SEWER				
BOROUGH OF FRANKLIN LAKES, BERGEN COUNTY, NEW JERSEY				
PLAN, PROFILE &				
SOIL EROSION AND SEDIMENT CONTROL PLAN				
STA. 17+00 TO STA. 22+73				
TM ASSOCIATES 11 TINDALL ROAD WESTFORD, NJ 07096 TEL 732-671-5400 FAX 732-671-1865 NEW JERSEY BOARD OF PROFESSIONAL ENGINEERS AND LAND SURVEYORS CERTIFICATE OF AUTHORIZATION 06-00099		KEITH W. HENDERSON, P.E. <i>Keith W. Henderson</i> LICENSED PROFESSIONAL ENGINEER STATE OF NEW JERSEY LICENSE No. 246203080400 DESIGNED BY BP PROJECT NO. NEUA-00098		DRAWING SHEET PP-2 DATE 2/5/11 CHECKED BY JAM FIELD BK. # N/A
				6 OF 39

COPYRIGHT 2010, TM ASSOCIATES - ALL RIGHTS RESERVED. NO PART OF THIS DOCUMENT MAY BE REPRODUCED OR TRANSMITTED IN ANY FORM OR BY ANY MEANS, ELECTRONIC OR MECHANICAL, WITHOUT THE WRITTEN PERMISSION OF TM ASSOCIATES, IS PROHIBITED.



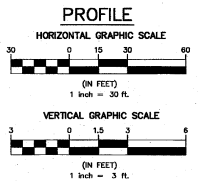
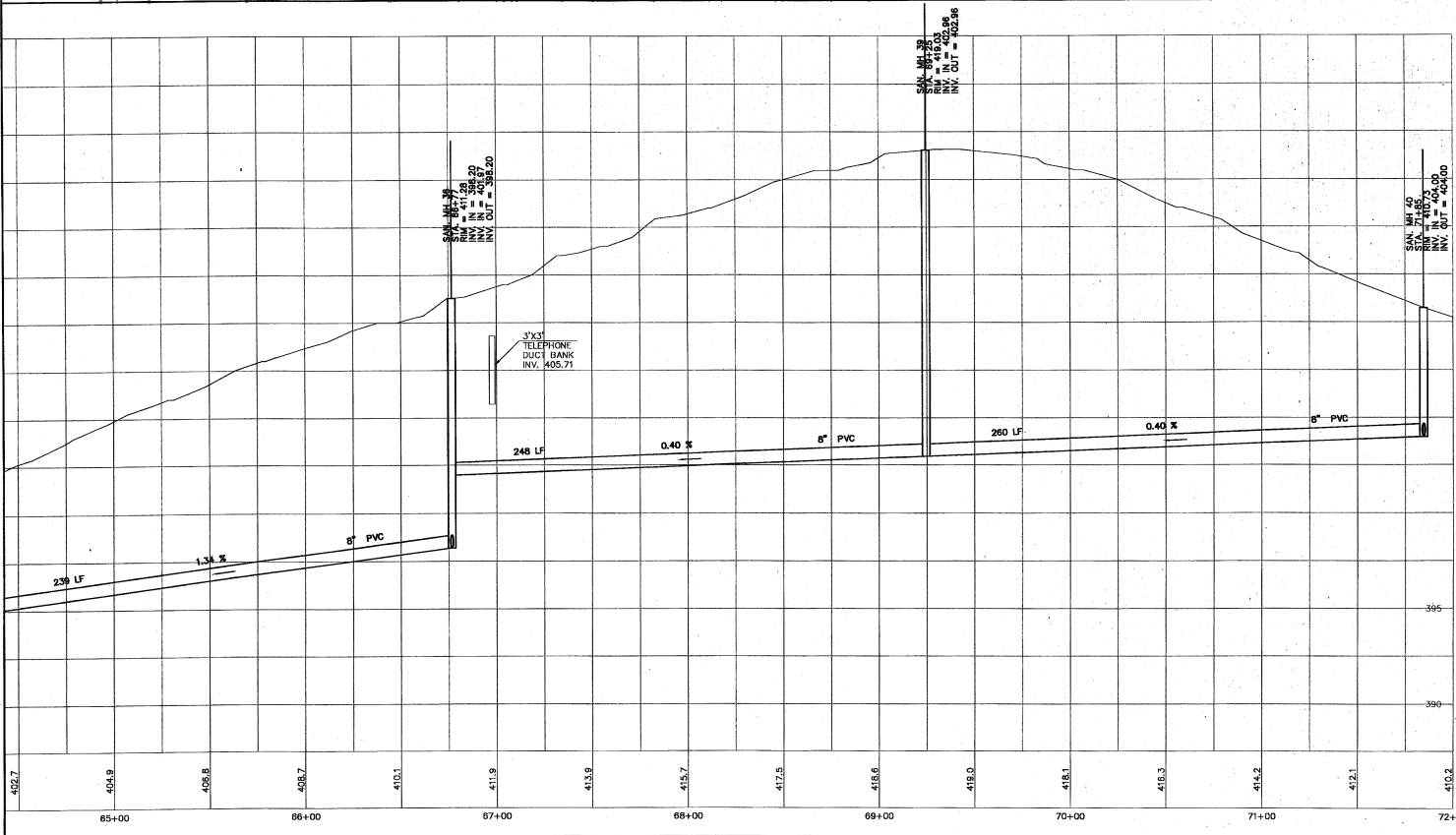
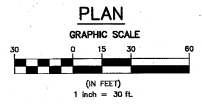
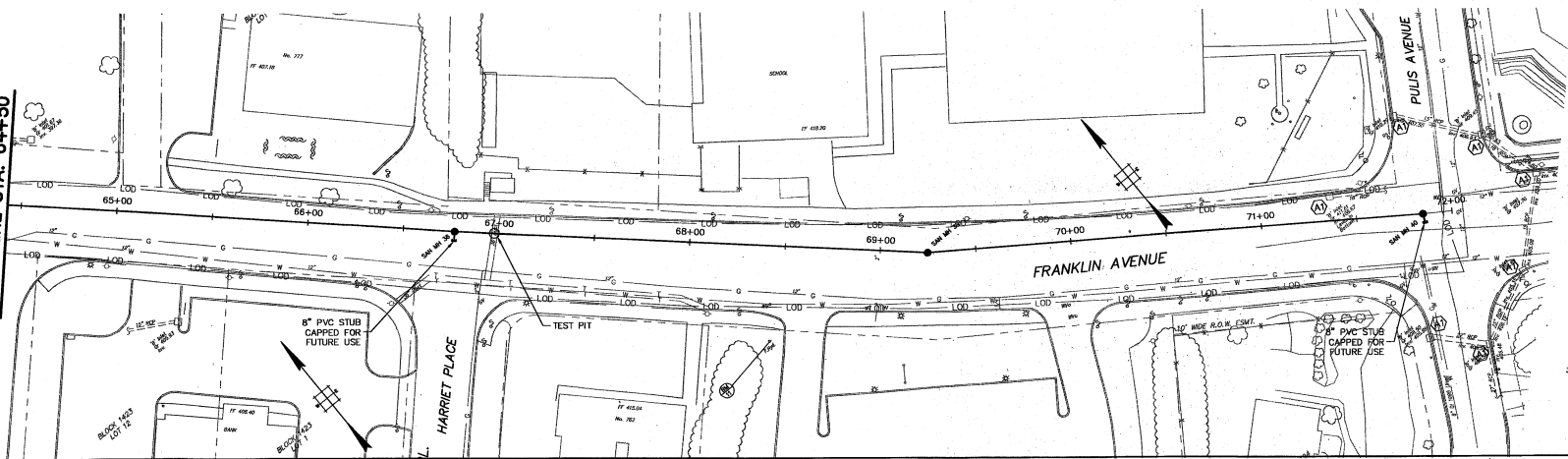
COPYRIGHT 2010, TMA ASSOCIATES - ALL RIGHTS RESERVED. ANY OTHER PLAN OR DESIGN PROJECT OR THE PURPOSE ORIGINALLY INTENDED, WITHOUT THE WRITTEN PERMISSION OF TMA ASSOCIATES, IS PROHIBITED.

NO.		DATE		REVISIONS		BY		CHECKED	
NORTHWEST BERGEN COUNTY UTILITIES AUTHORITY FRANKLIN LAKES BUSINESS DISTRICT SANITARY SEWER BOROUGH OF FRANKLIN LAKES, BERGEN COUNTY, NEW JERSEY PLAN, PROFILE & SOIL EROSION AND SEDIMENT CONTROL PLAN FRANKLIN AVENUE STA. 57+00 TO STA. 61+00									
		KEITH W. HENDERSON, P.E. 				DRAWING SHEET			
TMA ASSOCIATES 11 TINDALL ROAD MIDDLETOWN, NJ 07748 TEL 732-671-7365 FAX 732-671-7365		LICENSED PROFESSIONAL ENGINEER STATE OF NEW JERSEY LICENSE No. 24020008400				DESIGNED BY JHK			
NEW JERSEY BOARD OF PROFESSIONAL ENGINEERS AND LAND SURVEYORS CERTIFICATE OF REGISTRATION SA 020001		PROJECT NO. NJUA.00086		CADD FILE NJUA-SS-PP		DESIGNED BY BAH		CHECKED BY JHK	
						FIELD NO. # N/A		OF 39	



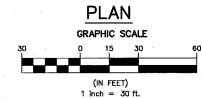
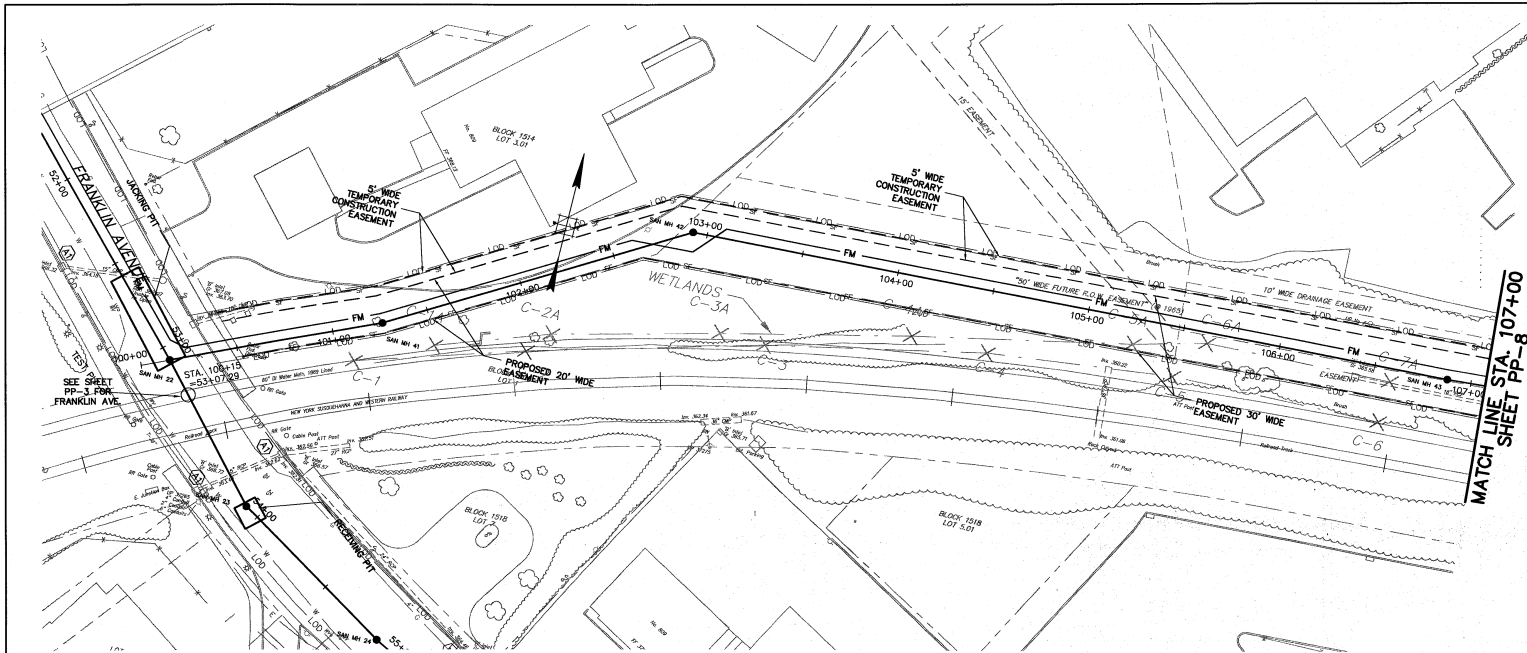
NO.		DATE		REVISIONS		BY	CHECKED
NORTHWEST BERGEN COUNTY UTILITIES AUTHORITY							
FRANKLIN LAKES BUSINESS DISTRICT SANITARY SEWER							
BOROUGH OF FRANKLIN LAKES, BERGEN COUNTY, NEW JERSEY							
PLAN, PROFILE & SOIL EROSION AND SEDIMENT CONTROL PLAN FRANKLIN AVENUE STA. 61+00 TO STA. 64+50							
		KEITH W. HENDERSON, P.E. 		9/24/10 DATE		DRAWING PP-5 SHEET	
TM ASSOCIATES 11 TRICAL ROAD MIDDLETOWN, NJ 07748 TEL. 732-671-7400 FAX 732-671-7365		LICENSED PROFESSIONAL ENGINEER STATE OF NEW JERSEY LICENSE NO. 24623080400		DESIGNED BY BAC		CHECKED BY JAM	
PROFESSIONAL ENGINEER AND LAND SURVEYOR CERTIFICATE OF AUTHORIZATION 6A-23867		PROJECT NO. NJUA-00006		CADD FILE 9099-SS-PP		FIELD NO. N/A	

SHEET PP-5
MATCH LINE STA. 64+50

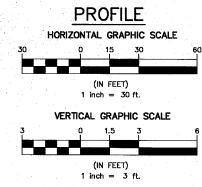
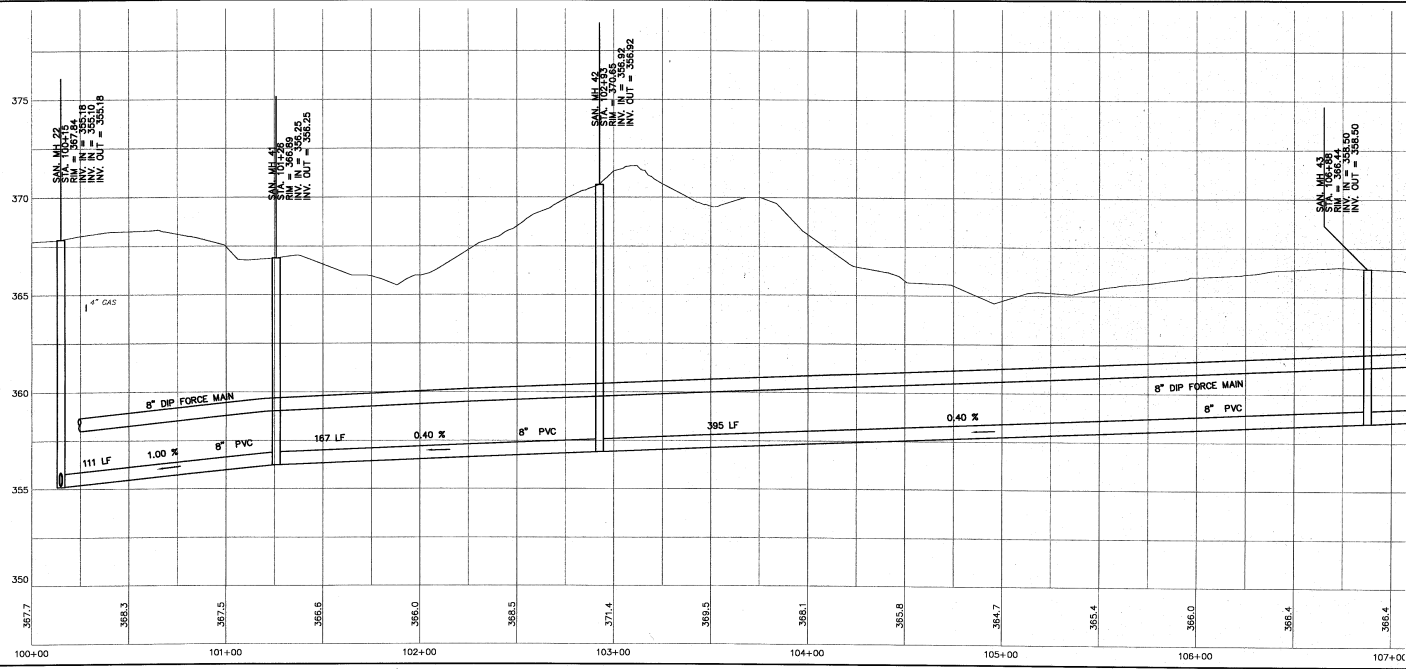


COPYRIGHT 2010, TMA ASSOCIATES, INC. ALL RIGHTS RESERVED. ANY REUSE OR REPRODUCTION OF THIS DRAWING WITHOUT THE WRITTEN PERMISSION OF TMA ASSOCIATES, INC. IS PROHIBITED.

NO.	DATE	REVISIONS	BY	CHECKED
NORTHWEST BERGEN COUNTY UTILITIES AUTHORITY FRANKLIN LAKES BUSINESS DISTRICT SANITARY SEWER BOROUGH OF FRANKLIN LAKES, BERGEN COUNTY, NEW JERSEY PLAN, PROFILE & SOIL EROSION AND SEDIMENT CONTROL PLAN FRANKLIN AVENUE STA. 64+50 TO STA. 72+00				
TMA ASSOCIATES 181 TRIUMPH ROAD MIDDLETOWN, NJ 07748 TEL: 732-671-5900 FAX: 732-671-7365		KEITH W. HENDERSON, P.E. LICENSED PROFESSIONAL ENGINEER STATE OF NEW JERSEY LICENSE NO. 240630306040 DESIGNED BY: JOK DRAWN BY: BAI CHECKED BY: JAM PROJECT NO. NEUA-00096 CADD FILE: NE99-SS-PP FIELD SK. # N/A		
DRAWING SHEET PP-6		10 OF 39		



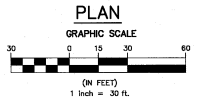
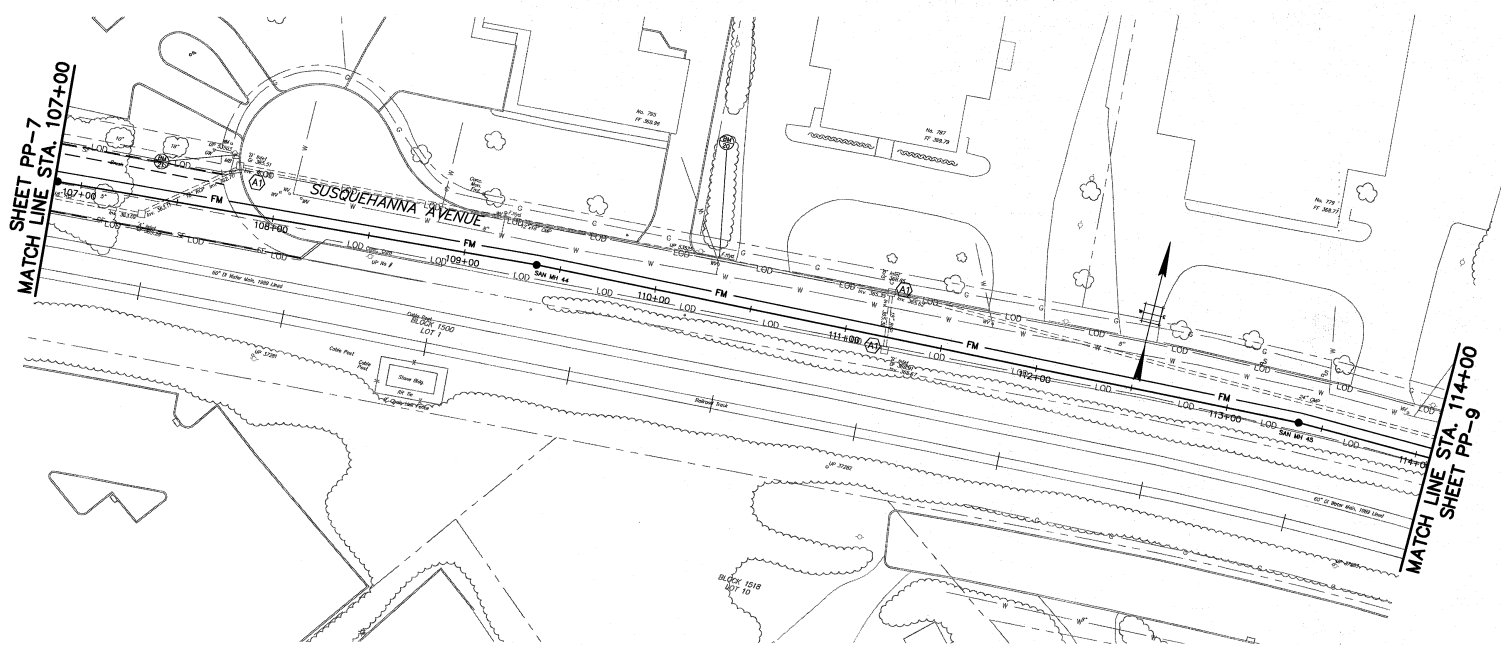
MATCH LINE STA. 107+00
SHEET PP-8



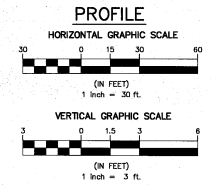
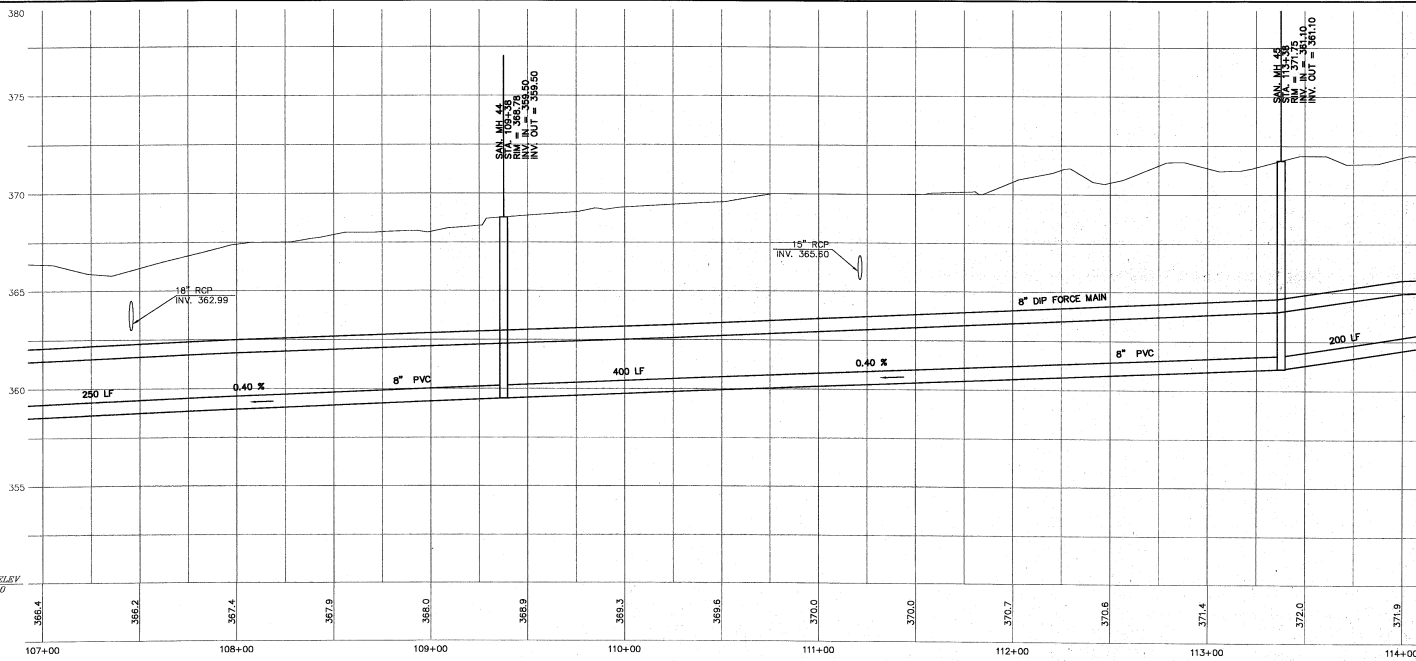
COPYRIGHT 2010, T&M ASSOCIATES - ALL RIGHTS RESERVED. NO PART OF THIS DOCUMENT MAY BE REPRODUCED OR TRANSMITTED IN ANY FORM OR BY ANY MEANS, ELECTRONIC OR MECHANICAL, WITHOUT THE WRITTEN PERMISSION OF T&M ASSOCIATES, INC.

NO.	DATE	REVISED PER NJDEP COMMENTS	BY	JHM
REVISIONS				
NORTHWEST BERGEN COUNTY UTILITIES AUTHORITY				
FRANKLIN LAKES BUSINESS DISTRICT SANITARY SEWER				
BOROUGH OF FRANKLIN LAKES, BERGEN COUNTY, NEW JERSEY				
PLAN, PROFILE & SOIL EROSION AND SEDIMENT CONTROL PLAN SUSQUEHANNA AVENUE STA. 100+00 TO STA. 107+00				
T&M ASSOCIATES 111 TINCALL ROAD MIDDLETOWN, NJ 07748 TEL: 732-871-4400 FAX: 732-871-7365 PROFESSIONAL ENGINEER STATE OF NEW JERSEY LICENSE NO. 240633086400		KEITH W. HENDERSON, P.E. DATE: 2/15/11 SHEET: 11 OF 39		
DESIGNED BY	BP	DRAWN BY	BHM	CHECKED BY
PROJECT NO.	NBJA-00096	CADD FILE	NB99-SS-PP	FIELD DR. #
		N/A		

SHEET PP-7
MATCH LINE STA. 107+00

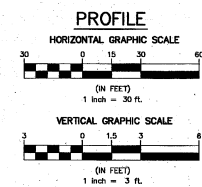
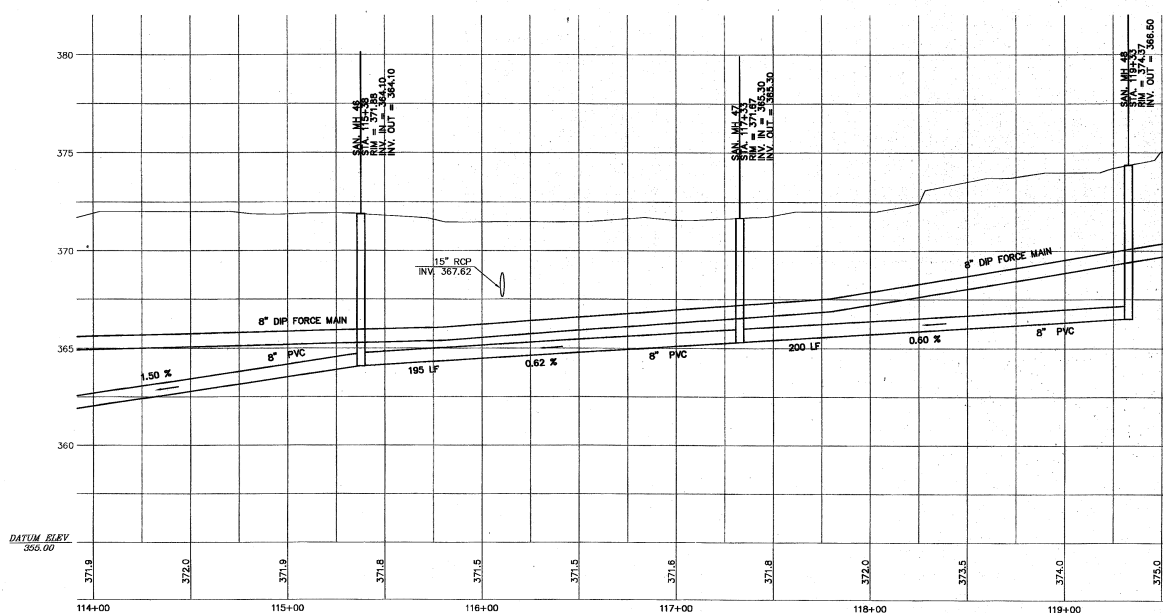
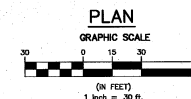
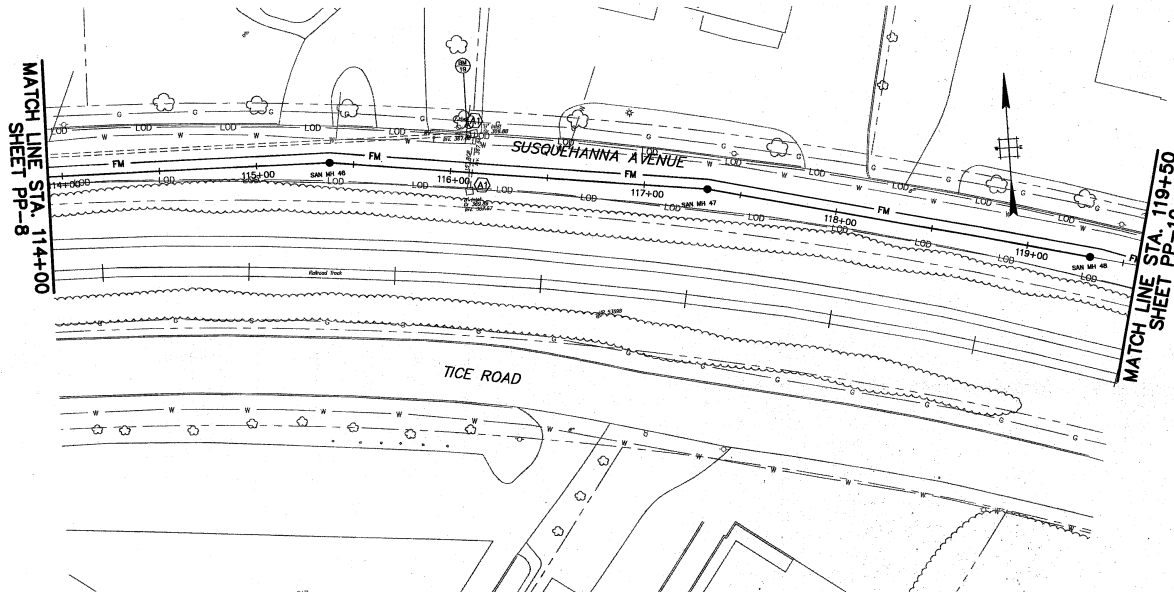


MATCH LINE STA. 114+00
SHEET PP-9



COPYRIGHT 2010, T&M ASSOCIATES - ALL RIGHTS RESERVED. NO PART OF THIS DOCUMENT MAY BE REPRODUCED OR TRANSMITTED IN ANY FORM OR BY ANY MEANS, WITHOUT THE WRITTEN PERMISSION OF T&M ASSOCIATES, INC.

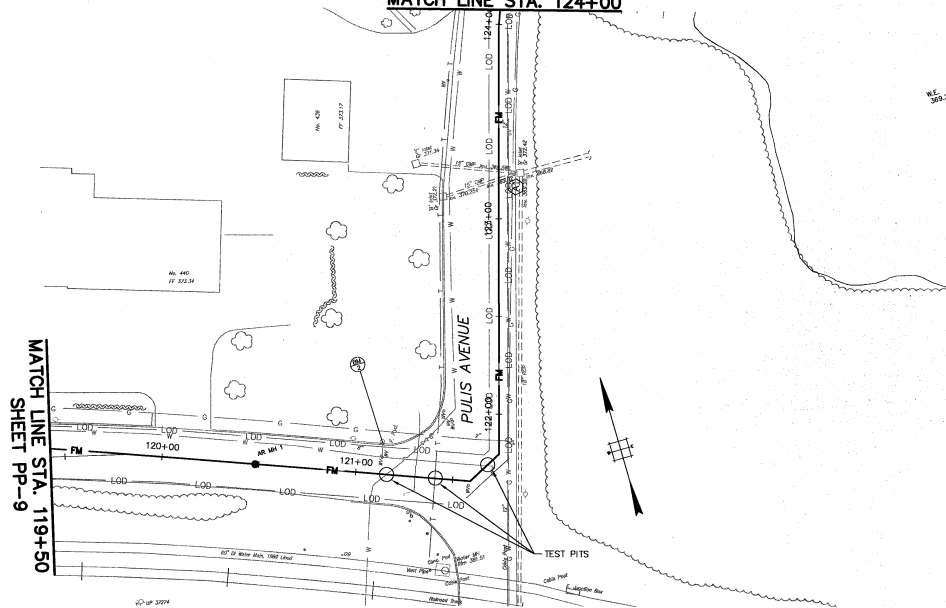
1	2/15/11	REVISED PER NJDEP COMMENTS	BP	JHM
NO.	DATE	REVISIONS	BY	CHECKED
NORTHWEST BERGEN COUNTY UTILITIES AUTHORITY				
FRANKLIN LAKES BUSINESS DISTRICT				
SANITARY SEWER				
BOROUGH OF FRANKLIN LAKES, BERGEN COUNTY, NEW JERSEY				
PLAN, PROFILE &				
SOIL EROSION AND SEDIMENT CONTROL PLAN				
SUSQUEHANNA AVENUE STA. 107+00 TO STA. 114+00				
KEITH W. HENDERSON, P.E.				
DATE: 2/15/11				
SHEET PP-8				
12 OF 39				



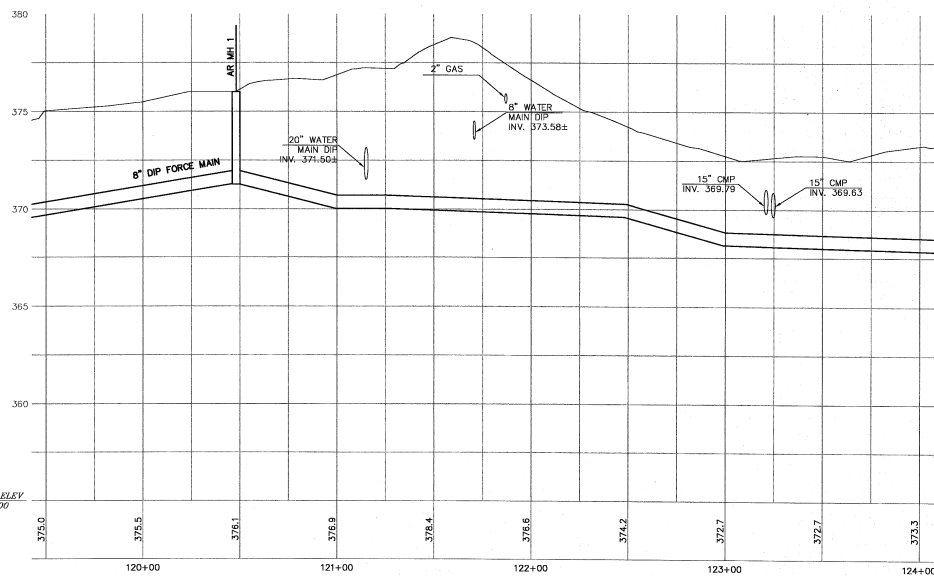
COPYRIGHT 2010, T&M ASSOCIATES - ALL RIGHTS RESERVED. NO PART OF THIS DOCUMENT IS TO BE REPRODUCED OR TRANSMITTED IN ANY FORM OR BY ANY MEANS, ELECTRONIC OR MECHANICAL, WITHOUT THE WRITTEN PERMISSION OF T&M ASSOCIATES, INC.

NO.		DATE		REVISIONS		BY		CHECKED	
NORTHWEST BERGEN COUNTY UTILITIES AUTHORITY FRANKLIN LAKES BUSINESS DISTRICT SANITARY SEWER BOROUGH OF FRANKLIN LAKES, BERGEN COUNTY, NEW JERSEY PLAN, PROFILE & SOIL EROSION AND SEDIMENT CONTROL PLAN SUSQUEHANNA AVENUE STA. 114+00 TO STA. 119+50									
T&M ASSOCIATES 11 TINDALL ROAD HOBOKEN, NJ 07030 TEL: 732-671-5400 FAX: 732-671-7365		KEITH W. HENDERSON, P.E. 9/10/10 DATE		DRAWING SHEET PP-9		13 OF 39		DESIGNED BY: JOK DRAWN BY: BAH CHECKED BY: JMM PROJECT NO.: NJUA-00086 CADD FILE: 8886-SS-PP PRINTED BY: N/A	

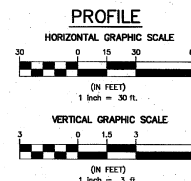
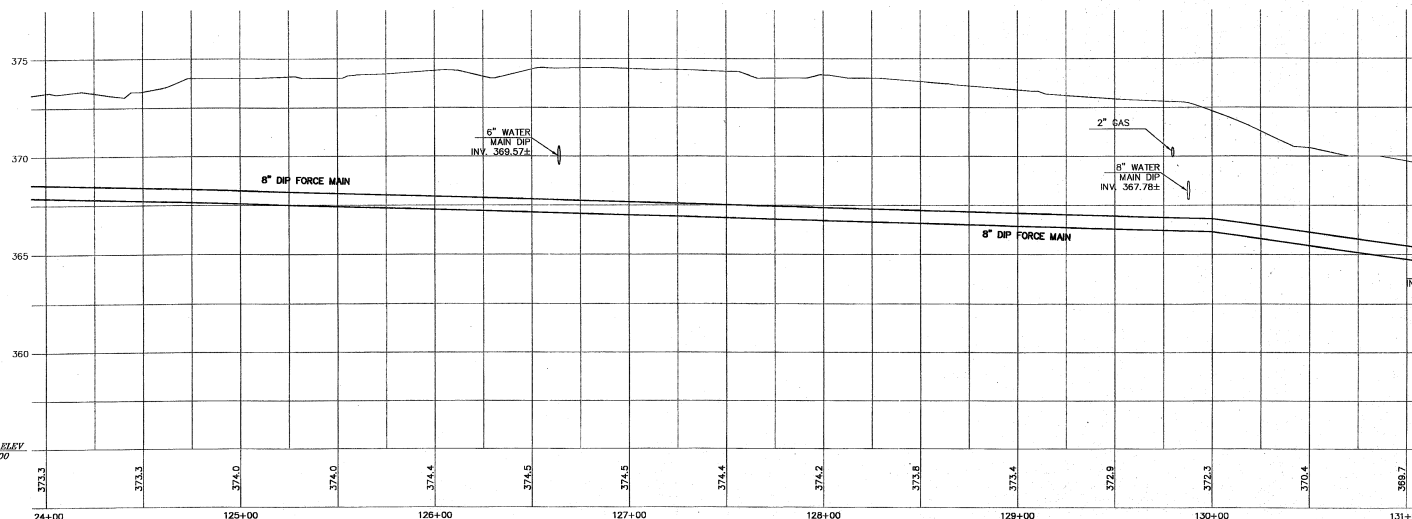
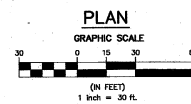
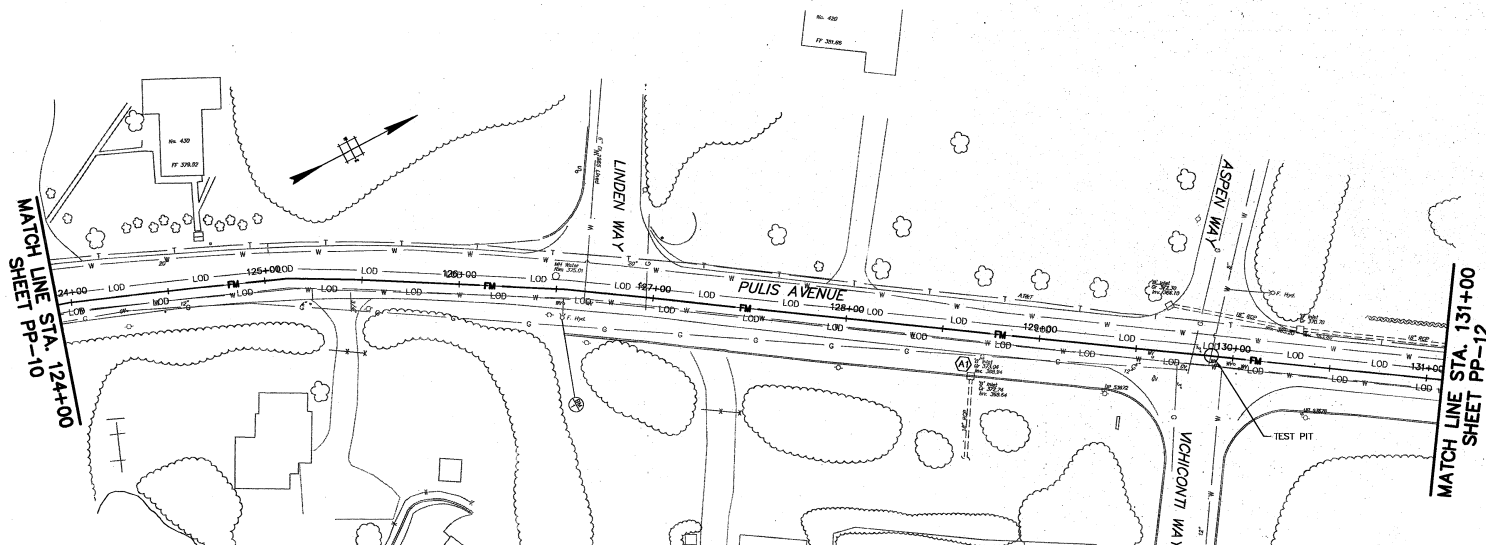
SHEET PP-11
MATCH LINE STA. 124+00



MATCH LINE STA. 119+50
SHEET PP-9



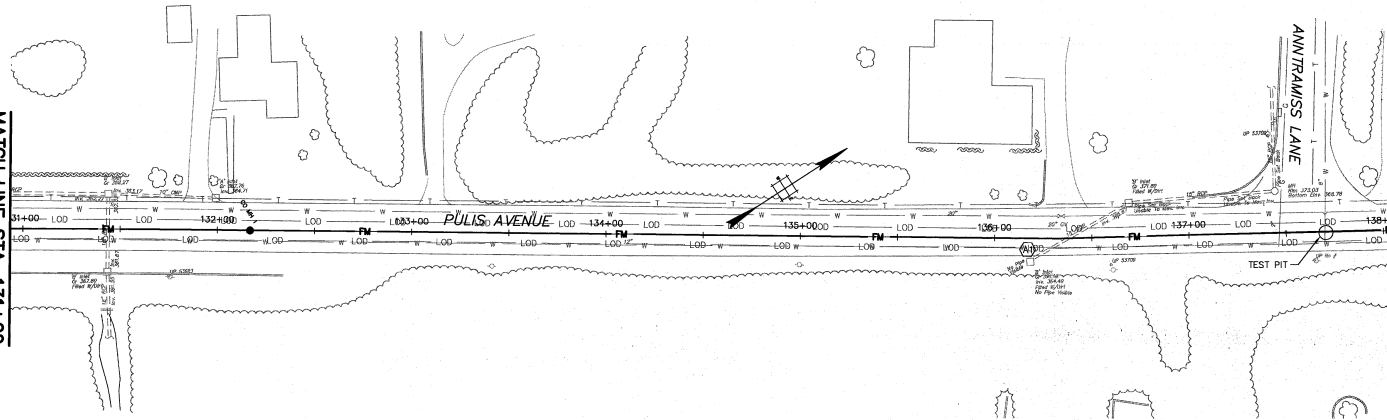
1	2/15/11	REVISED PER NJDEP COMMENTS	BP	JHM
NO.	DATE	REVISIONS	BY	CHECKED
NORTHWEST BERGEN COUNTY UTILITIES AUTHORITY				
FRANKLIN LAKES BUSINESS DISTRICT				
SANITARY SEWER				
BOROUGH OF FRANKLIN LAKES, BERGEN COUNTY, NEW JERSEY				
PLAN, PROFILE &				
SOIL EROSION AND SEDIMENT CONTROL PLAN				
PULIS AVENUE STA. 119+50 TO STA. 124+00				
KEITH W. HENDERSON, P.E.				
		DRAWING SHEET PP-10 14 OF 39		
TM ASSOCIATES 11 TRIUMPH BLVD. MIDDELTON, NJ 07740 TEL 732-671-8400 FAX 732-671-7900 NEW JERSEY BOARD OF PROFESSIONAL ENGINEERS AND LAND SURVEYORS CERTIFICATE OF AUTHORIZATION SA 212867		LICENSED PROFESSIONAL ENGINEER STATE OF NEW JERSEY LICENSE NO. 240633084000 DESIGNED BY: BP DRAWN BY: JHM CHECKED BY: JHM PROJECT NO.: NB04-00098 CADD FILE: NB06-FM-PP FIELD SK.: N/A		



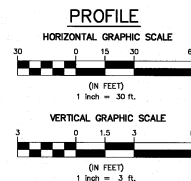
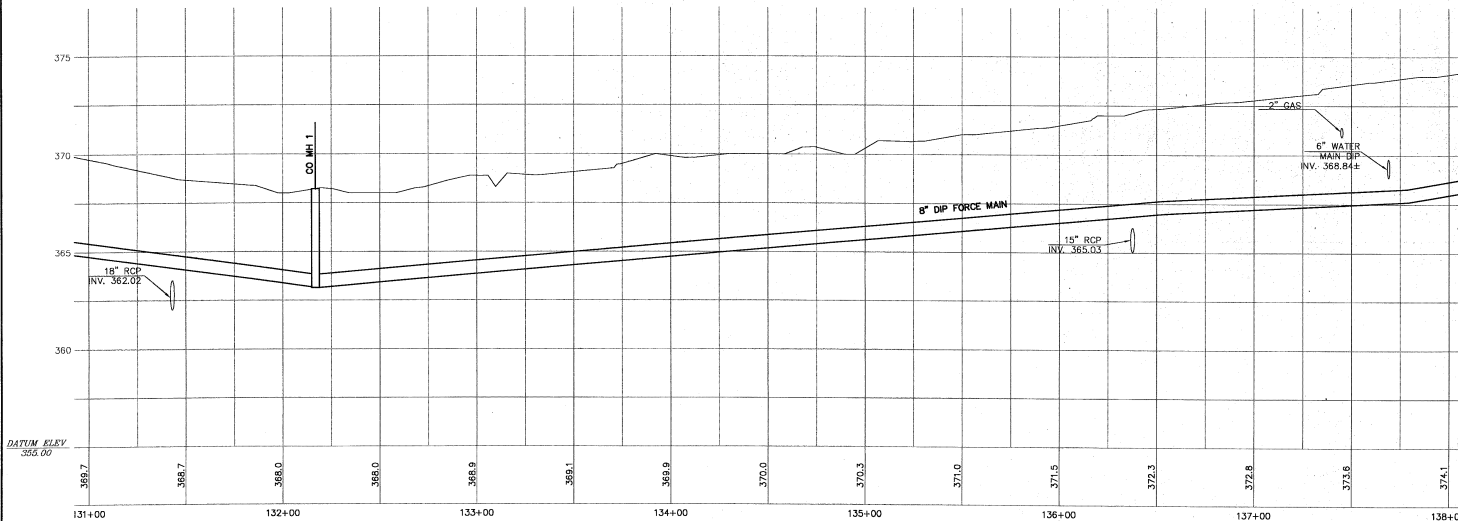
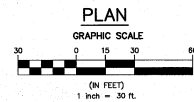
COPYRIGHT 2010, JAM ASSOCIATES, INC. ALL RIGHTS RESERVED. NO PART OF THIS DOCUMENT MAY BE REPRODUCED OR TRANSMITTED IN ANY FORM OR BY ANY MEANS, ELECTRONIC OR MECHANICAL, WITHOUT THE WRITTEN PERMISSION OF JAM ASSOCIATES, INC.

NO.		DATE		REVISIONS		BY		CHECKED	
NORTHWEST BERGEN COUNTY UTILITIES AUTHORITY									
FRANKLIN LAKES BUSINESS DISTRICT									
SANITARY SEWER									
BOROUGH OF FRANKLIN LAKES, BERGEN COUNTY, NEW JERSEY									
PLAN, PROFILE &									
SOIL EROSION AND SEDIMENT CONTROL PLAN									
PULIS AVENUE STA. 124+00 TO STA. 131+00									
 JAM ASSOCIATES 15 TINDALL ROAD MIDDLETON, NJ 07748 TEL: 732-671-5600 FAX: 732-671-5500 NEW JERSEY BOARD OF PROFESSIONAL ENGINEERS AND ARCHITECTS CERTIFICATE OF AUTHORIZATION 00000000		KEITH W. HENDERSON, P.E. LICENSED PROFESSIONAL ENGINEER STATE OF NEW JERSEY LICENSE NO. 240630080400		DRAWING BY DESIGNED BY JMK		CHECKED BY BAI		FIELD NO. # N/A	
PROJECT NO.		NBUA.00096		CADD FILE		NBUA-FM-PP		FIELD NO. #	
SHEET		PP-11		OF		38		15	

MATCH LINE STA. 131+00
SHEET PP-11



MATCH LINE STA. 138+00
SHEET PP-13

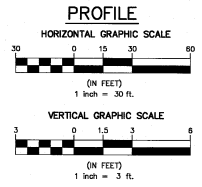
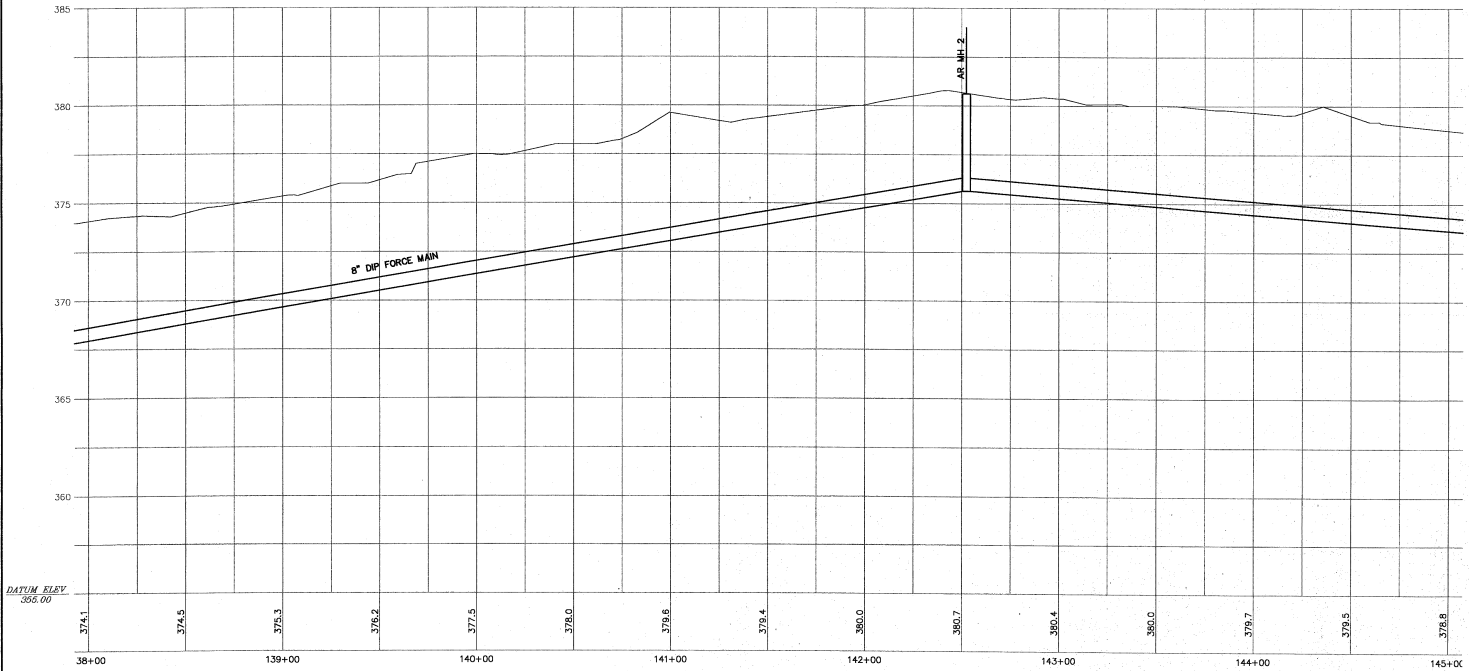
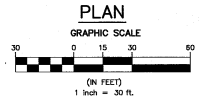
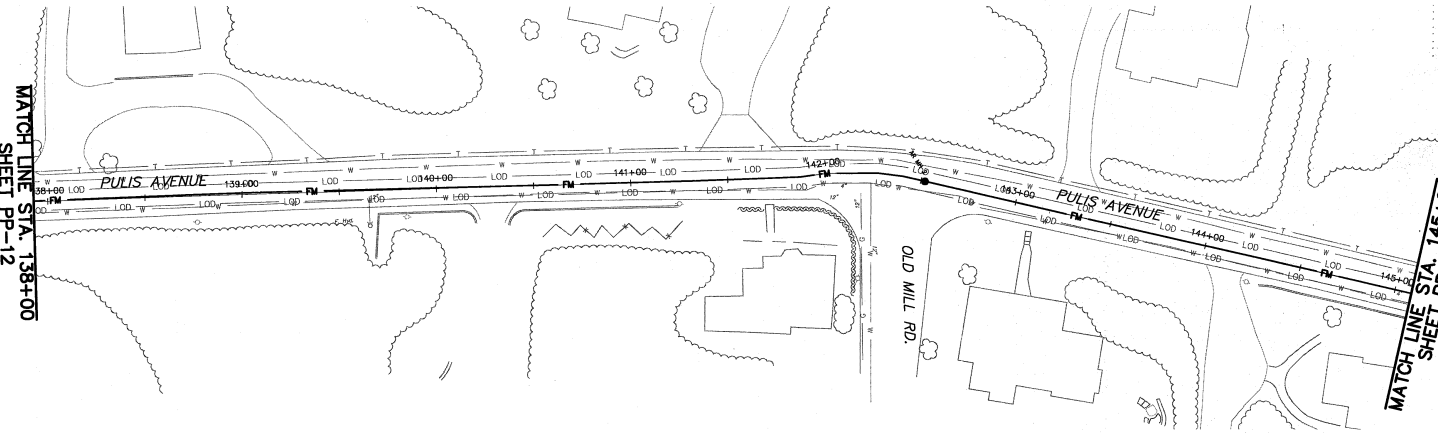


COPYRIGHT 2010, T&M ASSOCIATES, INC. ALL RIGHTS RESERVED. NO PART OF THIS DOCUMENT MAY BE REPRODUCED OR TRANSMITTED IN ANY FORM OR BY ANY MEANS, WITHOUT THE WRITTEN PERMISSION OF T&M ASSOCIATES, INC.

NO.	DATE	REVISED PER NJDEP COMMENTS	BY	JHM
1	2/15/11			
NORTHWEST BERGEN COUNTY UTILITIES AUTHORITY				
FRANKLIN LAKES BUSINESS DISTRICT SANITARY SEWER				
BOROUGH OF FRANKLIN LAKES, BERGEN COUNTY, NEW JERSEY				
PLAN, PROFILE & SOIL EROSION AND SEDIMENT CONTROL PLAN PULIS AVENUE STA. 131+00 TO STA. 138+00				
T&M ASSOCIATES 11 TINDALL ROAD MIDDLERTOWN, NJ 07748 TEL: 732-871-6600 FAX: 732-871-7365 PROFESSIONAL ENGINEER LAND SURVEYOR OFFICE OF AUTHORIZATION 0A 12860			DRAWING SHEET PP-12 16 OF 39	
DESIGNED BY	BP	DRAWN BY	BNH	CHECKED BY
PROJECT NO.	NDUA 00086	CADD FILE	18886-PM-PP	FIELD SK: #
				N/A

MATCH LINE STA. 138+00
SHEET PP-12

MATCH LINE STA. 145+00
SHEET PP-14

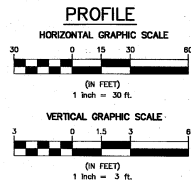
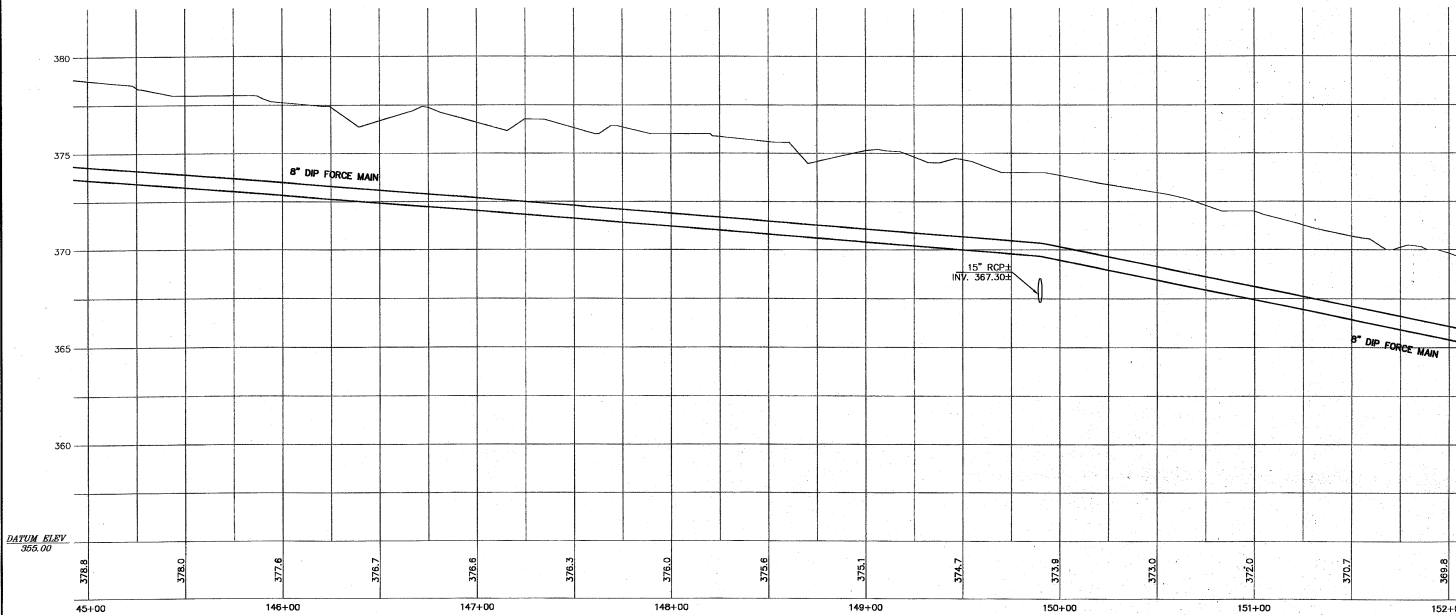
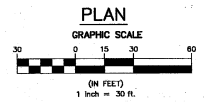


COPYRIGHT 2010, T&M ASSOCIATES, INC. ALL RIGHTS RESERVED. NO PART OF THIS DOCUMENT MAY BE REPRODUCED OR TRANSMITTED IN ANY FORM OR BY ANY MEANS, ELECTRONIC OR MECHANICAL, WITHOUT THE WRITTEN PERMISSION OF T&M ASSOCIATES, INC.

NO.	DATE	REVISED PER INDEP. COMMENTS	BY	CHECKED
1	2/15/11		BP	JHM
NORTHWEST BERGEN COUNTY UTILITIES AUTHORITY				
FRANKLIN LAKES BUSINESS DISTRICT SANITARY SEWER				
BOROUGH OF FRANKLIN LAKES, BERGEN COUNTY, NEW JERSEY				
PLAN, PROFILE & SOIL EROSION AND SEDIMENT CONTROL PLAN PULIS AVENUE STA. 138+00 TO STA. 145+00				
KEITH W. HENDERSON, P.E. 11 TINDALL ROAD MIDDLETOWN, NJ 07748 TEL. 732-671-6600 FAX 732-671-7860 NEW JERSEY LICENSE NO. 24063300400 PROFESSIONAL ENGINEER LICENSED PROFESSIONAL ENGINEER STATE OF NEW JERSEY LICENSE NO. 24063300400 DESIGNED BY: BP DRAWN BY: BHM CHECKED BY: JHM PROJECT NO.: NSUA.00096 CADD FILE: 18986-FM-PP FIELD SHEET: N/A				
DRAWING PP-13				SHEET 17 OF 39

SHEET PP-13
MATCH LINE STA. 145+00

PULIS AVENUE
MATCH LINE STA. 152+00
SHEET PP-15



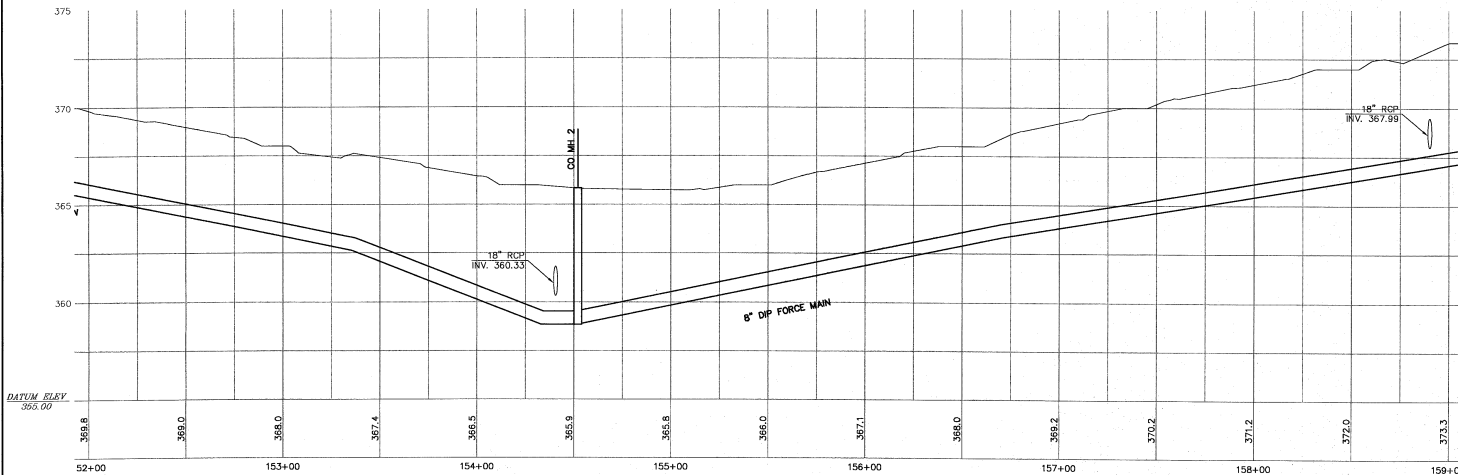
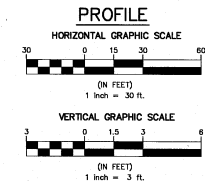
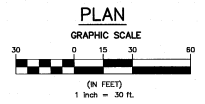
COPYRIGHT 2010, B&W ASSOCIATES. ALL RIGHTS RESERVED. NO PART OF THIS DOCUMENT MAY BE REPRODUCED OR TRANSMITTED IN ANY FORM OR BY ANY MEANS, ELECTRONIC OR MECHANICAL, WITHOUT THE WRITTEN PERMISSION OF B&W ASSOCIATES. IT IS THE POLICY OF B&W ASSOCIATES TO PROVIDE A SAFE AND SOUND DESIGN FOR THE PROJECT AND TO MAINTAIN THE PROJECT AND TO MAINTAIN THE PROJECT AND TO MAINTAIN THE PROJECT.

NO.	DATE	REVISIONS	BY	CHECKED
NORTHWEST BERGEN COUNTY UTILITIES AUTHORITY				
FRANKLIN LAKES BUSINESS DISTRICT				
SANITARY SEWER				
BOROUGH OF FRANKLIN LAKES, BERGEN COUNTY, NEW JERSEY				
PLAN, PROFILE & SOIL EROSION AND SEDIMENT CONTROL PLAN				
PULIS AVENUE STA. 145+00 TO STA. 152+00				
		KEITH W. HENDERSON, P.E. 		
B&W ASSOCIATES 11 TINDALL ROAD MIDDLETON, NJ 07748 TEL 732-571-5400 FAX 732-571-1360 NEW JERSEY BOARD OF PROFESSIONAL ENGINEERS AND LAND SURVEYORS CERTIFICATE OF AUTHORIZATION 04-000000		LICENSED PROFESSIONAL ENGINEER STATE OF NEW JERSEY LICENSE NO. 240603080400 DESIGNED BY JWK DRAWN BY BAH CHECKED BY JMM CADD FILE 1086-FM-PP FIELD NO. N/A		
PROJECT NO. NUUA.00006 CADD FILE 1086-FM-PP FIELD NO. N/A		DRAWING SHEET PP-14 18 OF 38		

MATCH LINE STA. 152+00
SHEET PP-14

MATCH LINE STA. 159+00
SHEET PP-16

PULIS AVENUE

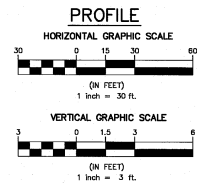
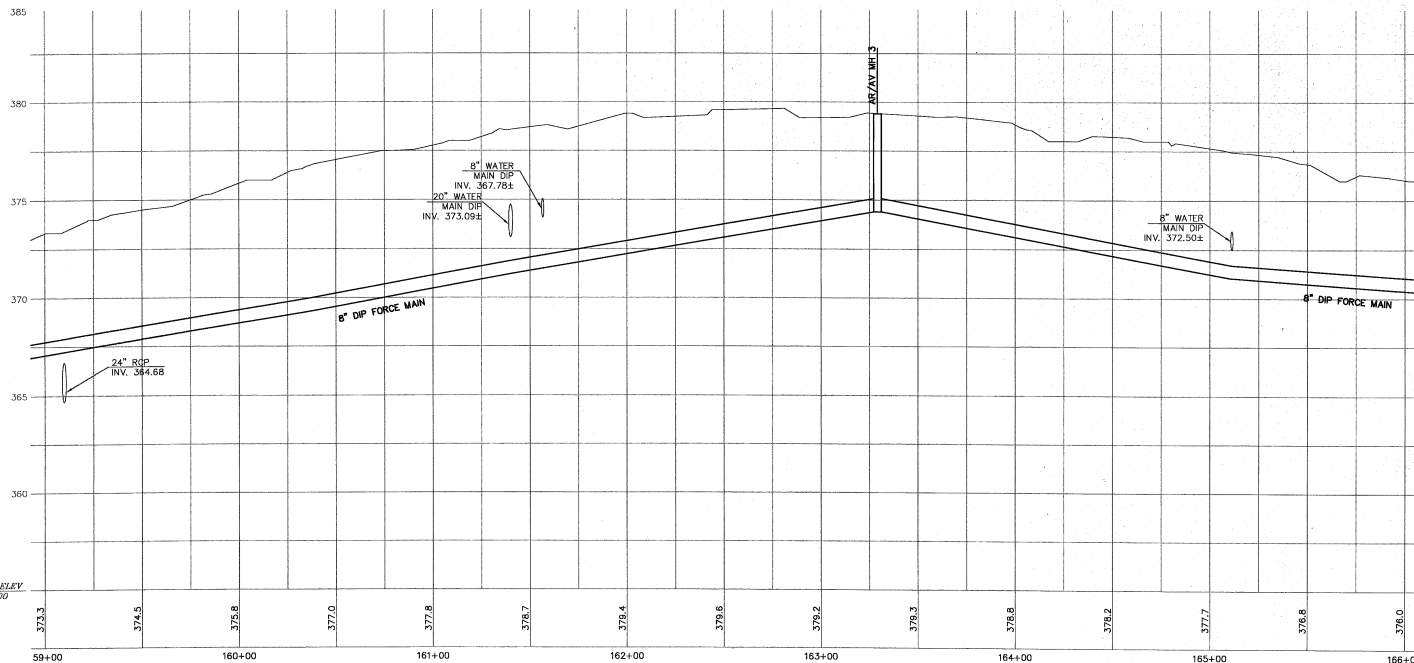
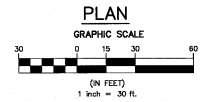


COPYRIGHT 2010, T&M ASSOCIATES - ALL RIGHTS RESERVED. NO PART OF THIS DOCUMENT MAY BE REPRODUCED OR TRANSMITTED IN ANY FORM OR BY ANY MEANS, WITHOUT THE WRITTEN PERMISSION OF T&M ASSOCIATES, IS PROHIBITED.

1	2/15/11	REVISED PER NJDEP COMMENTS	BP	JWM
NO.	DATE	REVISIONS	BY	CHECKED
NORTHWEST BERGEN COUNTY UTILITIES AUTHORITY				
FRANKLIN LAKES BUSINESS DISTRICT SANITARY SEWER				
BOROUGH OF FRANKLIN LAKES, BERGEN COUNTY, NEW JERSEY				
PLAN, PROFILE & SOIL EROSION AND SEDIMENT CONTROL PLAN				
PULIS AVENUE STA. 152+00 TO STA. 159+00				
KEITH W. HENDERSON, P.E.				
T&M ASSOCIATES 11 THORNTON ROAD MIDDLERTOWN, NJ 07748 TEL. 732-671-6400 FAX 732-671-7365		LICENSED PROFESSIONAL ENGINEER STATE OF NEW JERSEY LICENSE NO. 240633080400		
DESIGNED BY	BP	DRAWN BY	BAH	CHECKED BY
PROJECT NO.	NR04-00096	CAAD FILE	NR06-TM-PP	FIELD NO. #
CERTIFICATE OF AUTHORIZATION	SA 425897	DATE		
DRAWING				PP-15
SHEET				19 OF 39

MATCH LINE STA. 159+00
SHEET PP-15

MATCH LINE STA. 166+00
SHEET PP-17



COPYRIGHT 2010, T&M ASSOCIATES - ALL RIGHTS RESERVED. NO PART OF THIS DOCUMENT IS TO BE REPRODUCED OR TRANSMITTED IN ANY FORM OR BY ANY MEANS, WITHOUT THE WRITTEN PERMISSION OF T&M ASSOCIATES, IS PROHIBITED.

1	2/15/11	REVISED PER NJDEP COMMENTS	BP	JAM
NO.	DATE	REVISIONS	BY	CHECKED
NORTHWEST BERGEN COUNTY UTILITIES AUTHORITY				
FRANKLIN LAKES BUSINESS DISTRICT				
SANITARY SEWER				
BOROUGH OF FRANKLIN LAKES, BERGEN COUNTY, NEW JERSEY				
PLAN, PROFILE & SOIL EROSION AND SEDIMENT CONTROL PLAN				
PULIS AVENUE STA. 159+00 TO STA. 166+00				
KEITH W. HENDERSON, P.E. LICENSED PROFESSIONAL ENGINEER STATE OF NEW JERSEY LICENSE NO. 24623080400 PROJECT NO. NJUA00089 DATE 2/13/11				
DESIGNED BY	BP	DRAWN BY	JAM	CHECKED BY
PROJECT NO.	NJUA00089	DATE FILE	NB99-PM-PP	FIELD NO.
CERTIFICATE OF AUTHORIZATION	SA 228897			

DRAWING
SHEET
PP-16
20 OF 39